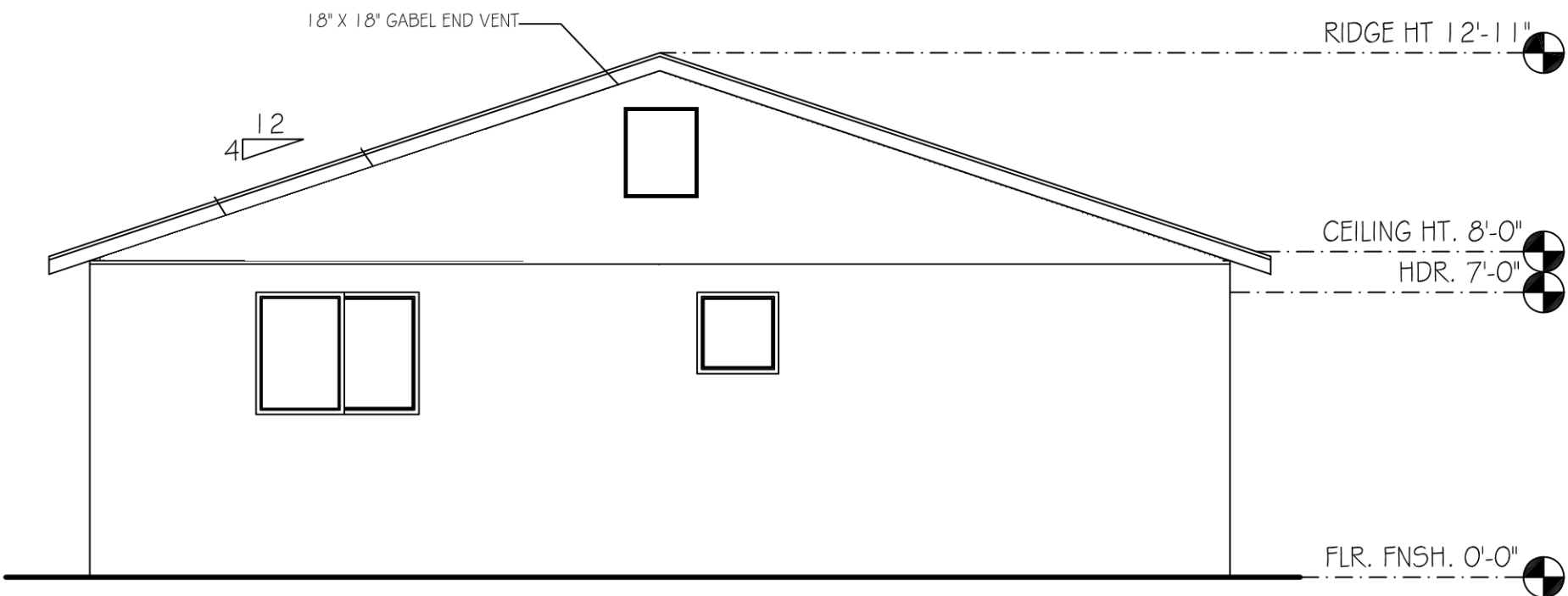


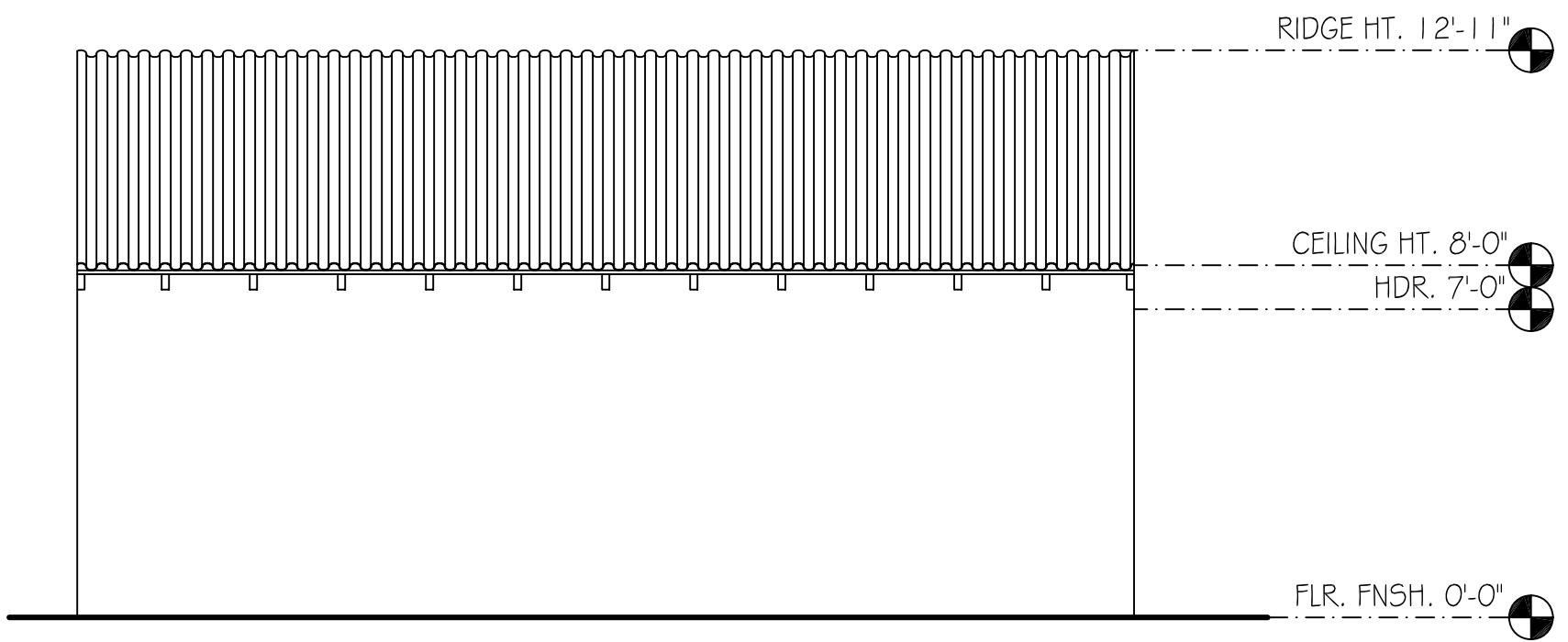
ELEV. 1
SCALE: 1/4" = 1'-0"

PG. 1 OF 25

LAZARIAN WORLD HOME

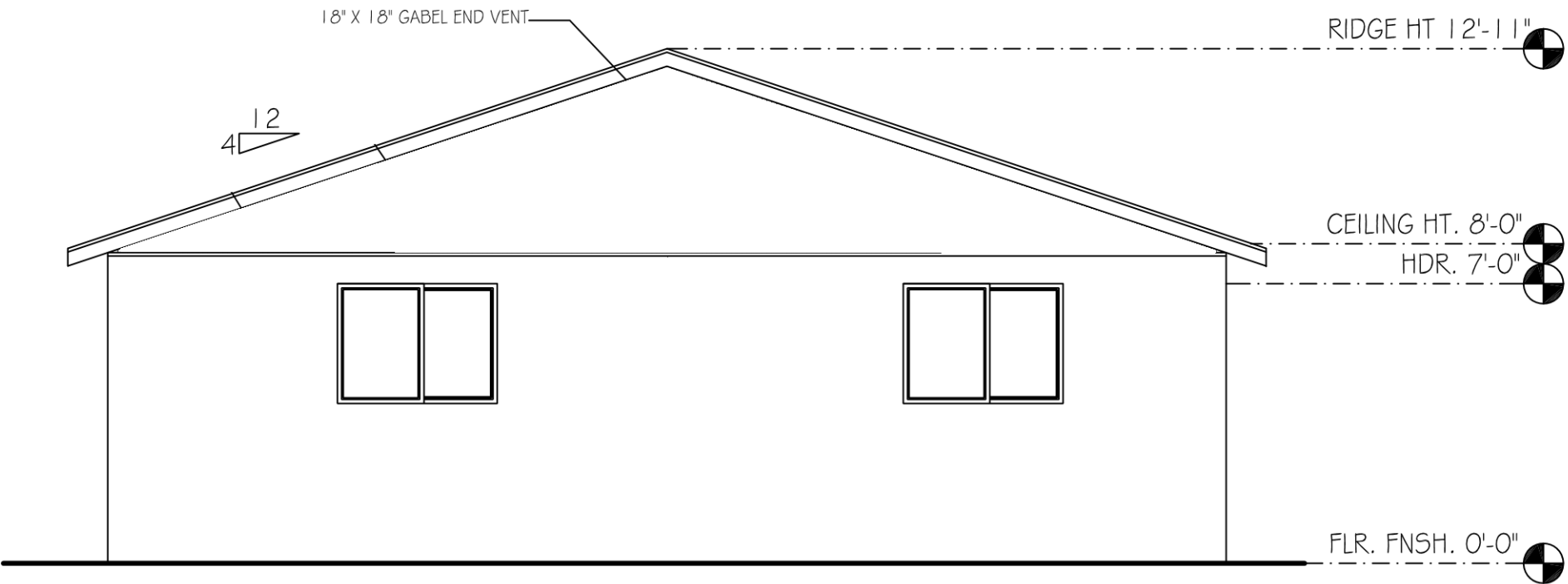


ELEV. 2
SCALE: 1/4" = 1'-0"

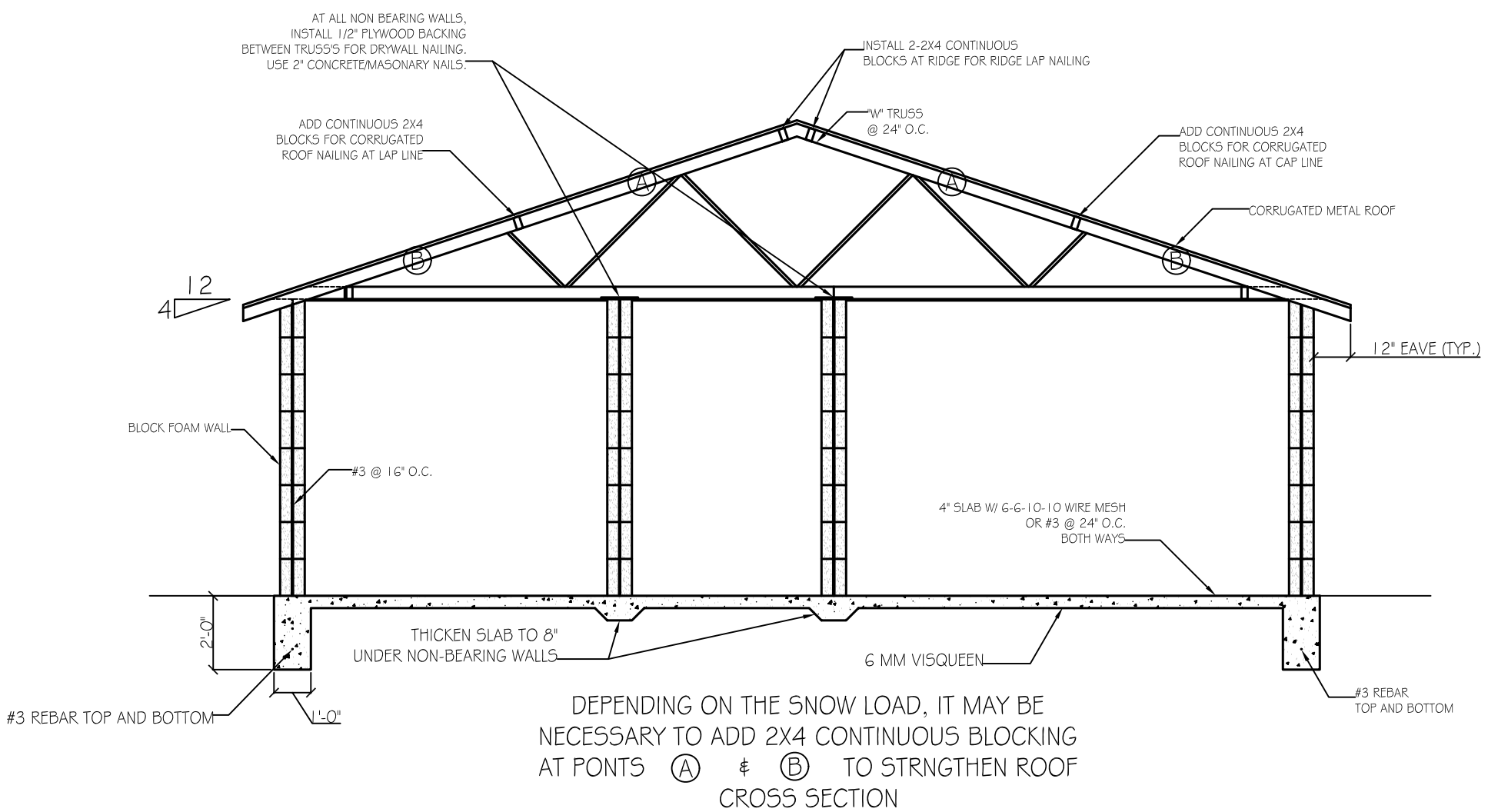


ELEV. 3
SCALE: 1/4" = 1'-0"

PG. 3 OF 25



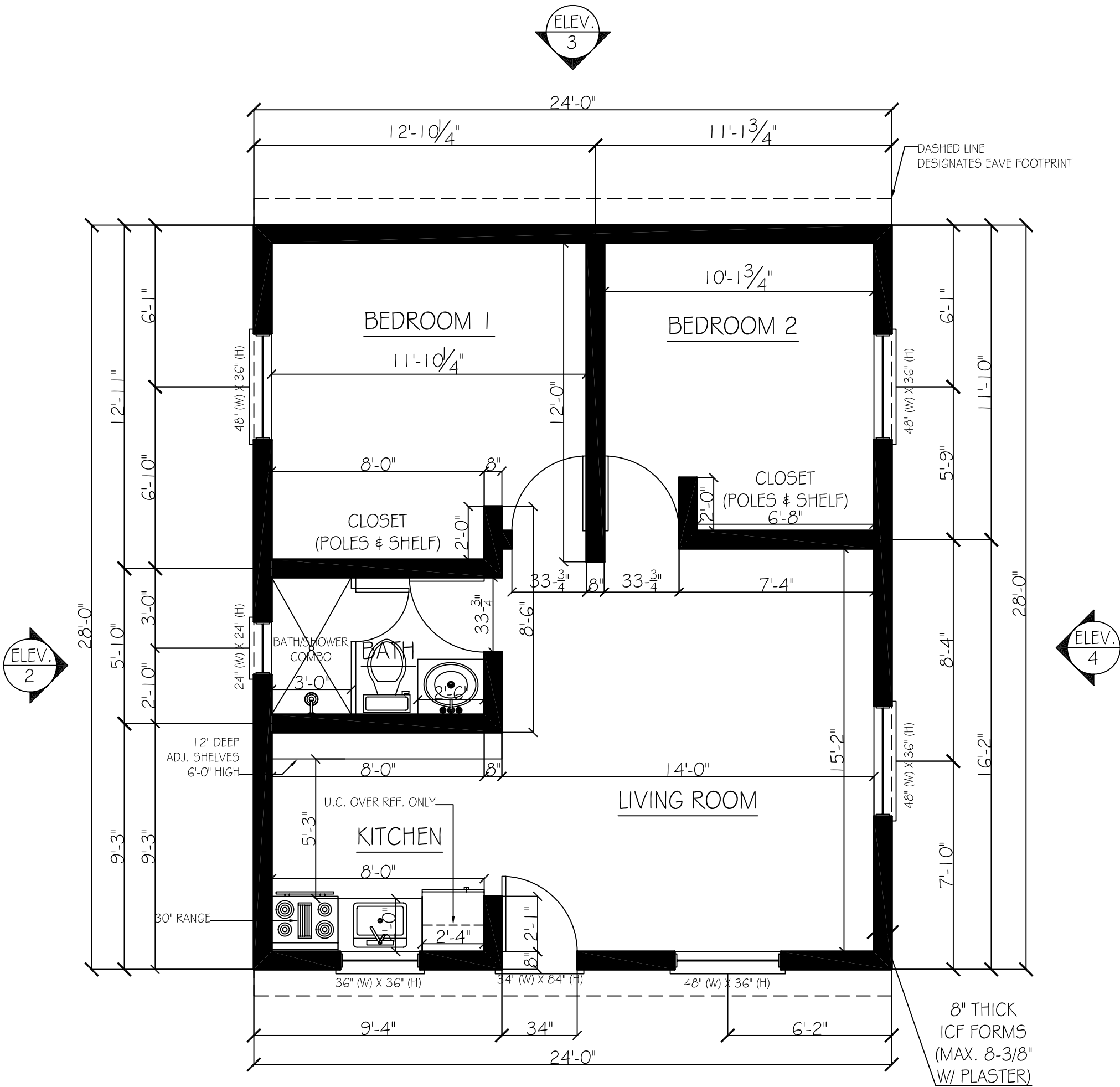
ELEV. 4
SCALE: 1/4" = 1'-0"



SECTION A-A

SCALE: 1/4" = 1'-0"

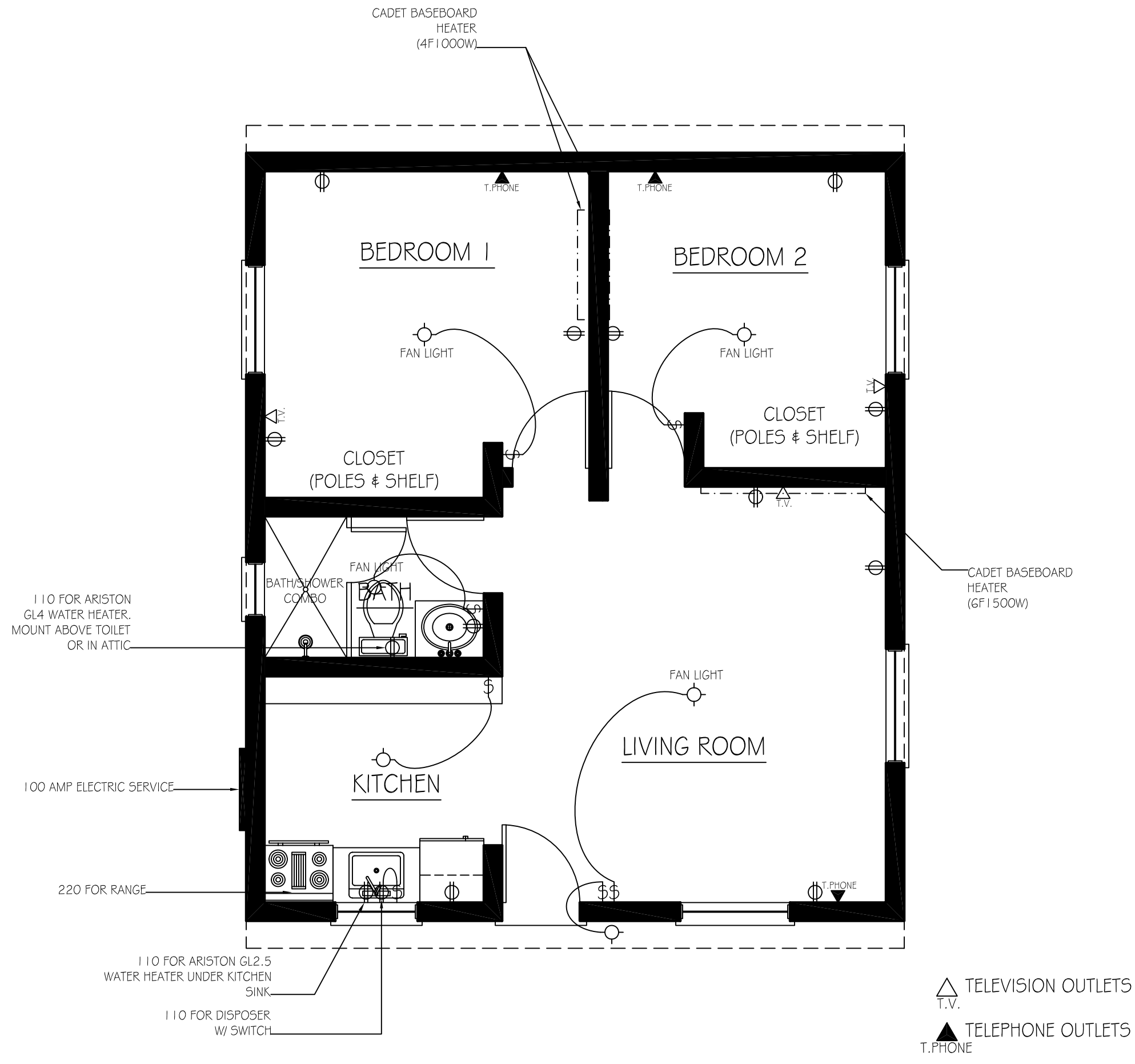
PG. 5 OF 25

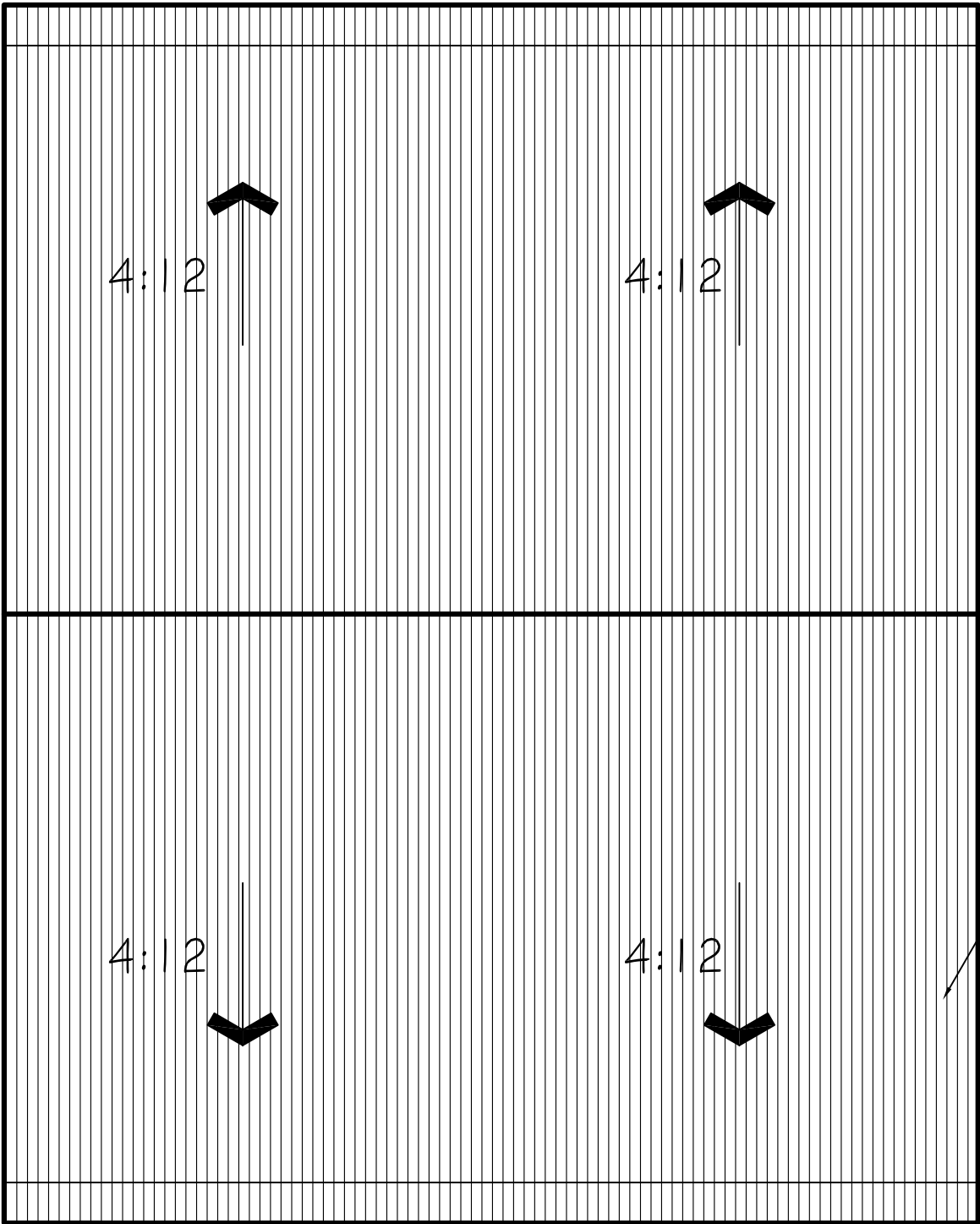


ELEV. 1

FLOOR PLAN PG. 6 OF 25

SCALE: 1/4" = 1'-0"

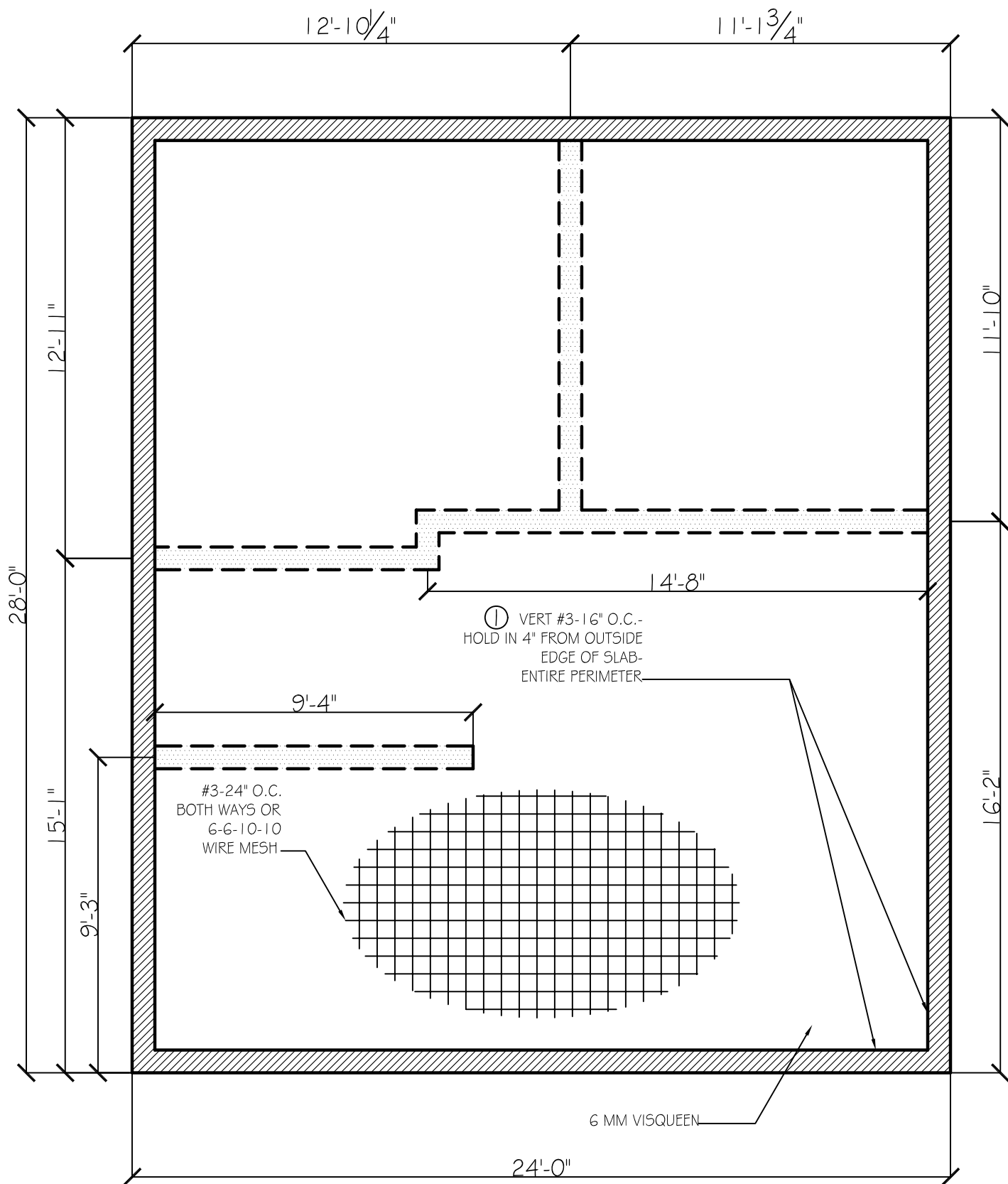




ROOF PLAN

SCALE: 1/4" = 1'-0"

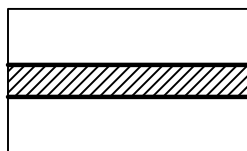
PG. 8 OF 25



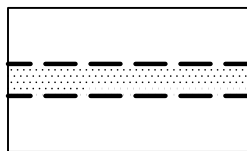
FOUNDATION PLAN

SCALE: 1/4" = 1'-0"

4" CONC. SLAB
SLAB DIMENSIONS 24'-0" WIDE X 28'-0" DEEP
4" THICK SLAB W/ #3 - 24" O.C.
BOTH WAYS OR 6-6-10-10 WIRE MESH
AND 6 MM VISQUEEN



WALLS W/ FTGS. 12" WIDE X 24" DEEP W/ #3
REBAR T&B CONTINUOUS - INSTALL #3
VERTICAL REBAR PER DETAIL ①



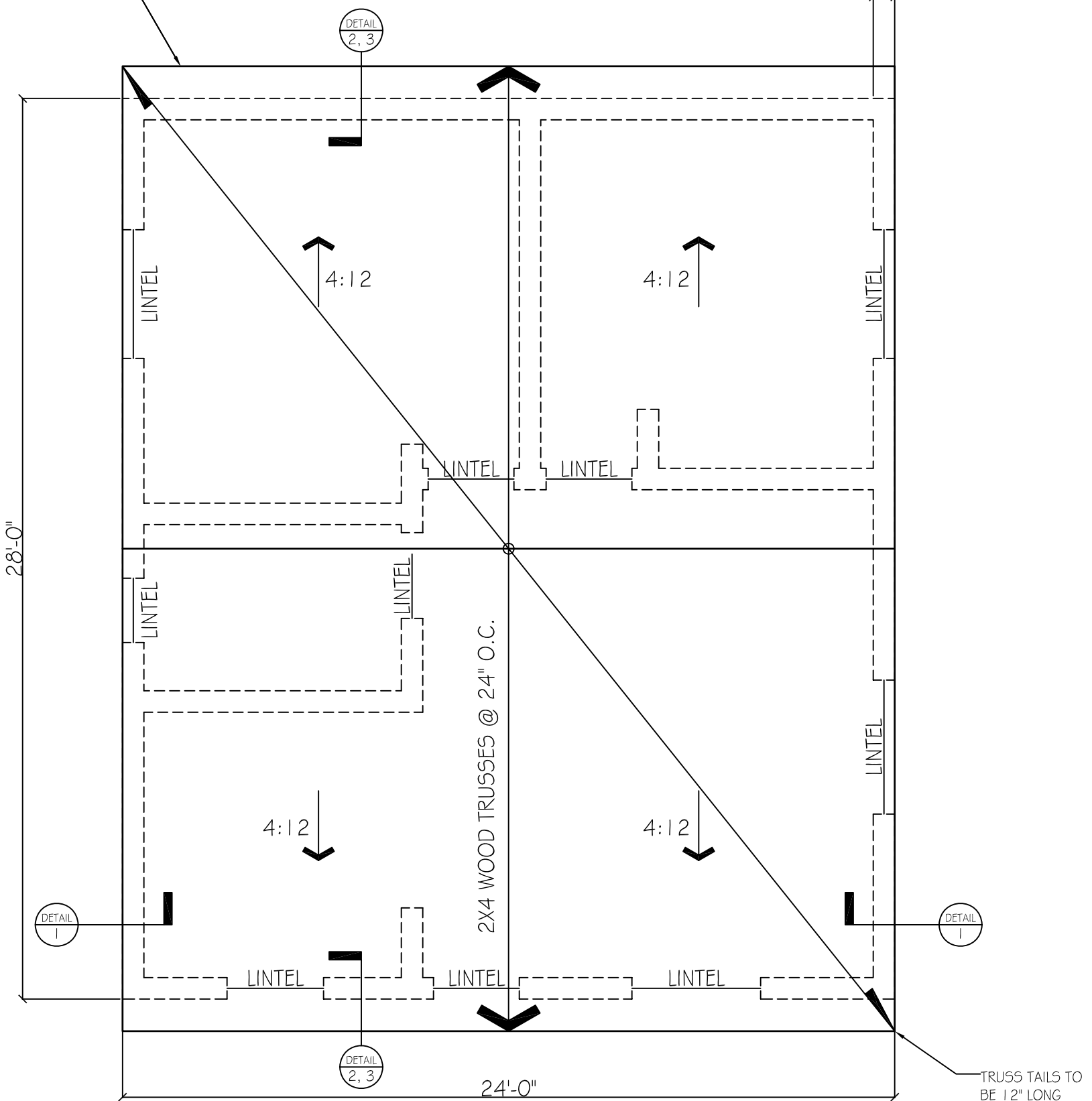
THICKEN SLAB TO 8" UNDER NON-BEARING
WALLS (DRILL AND EPOXY #3 REBAR 3'-0"
LONG 16" O.C. INTO ALL
NON-BEARING WALLS WITH THICKEN SLAB).



USE 3'-0" LONG #3 AND EXPOSE 2'-0" LONG
VERTICAL (THEREFORE 12" INTO SLAB/FTG.
AND TIE TO TOP REBAR). VERTICAL #3 REBAR
TO BE 16" O.C. ENTIRE PERIMETER OF SLAB
(LAYOUT-HOLD IN 4" FROM OUTSIDE
CORNERS AND FROM OUTSIDE EDGE OF
SLAB).

12" CORRUGATED METAL
ROOF OVERHANG
(NO FASCIA)

8" THICK WALLS

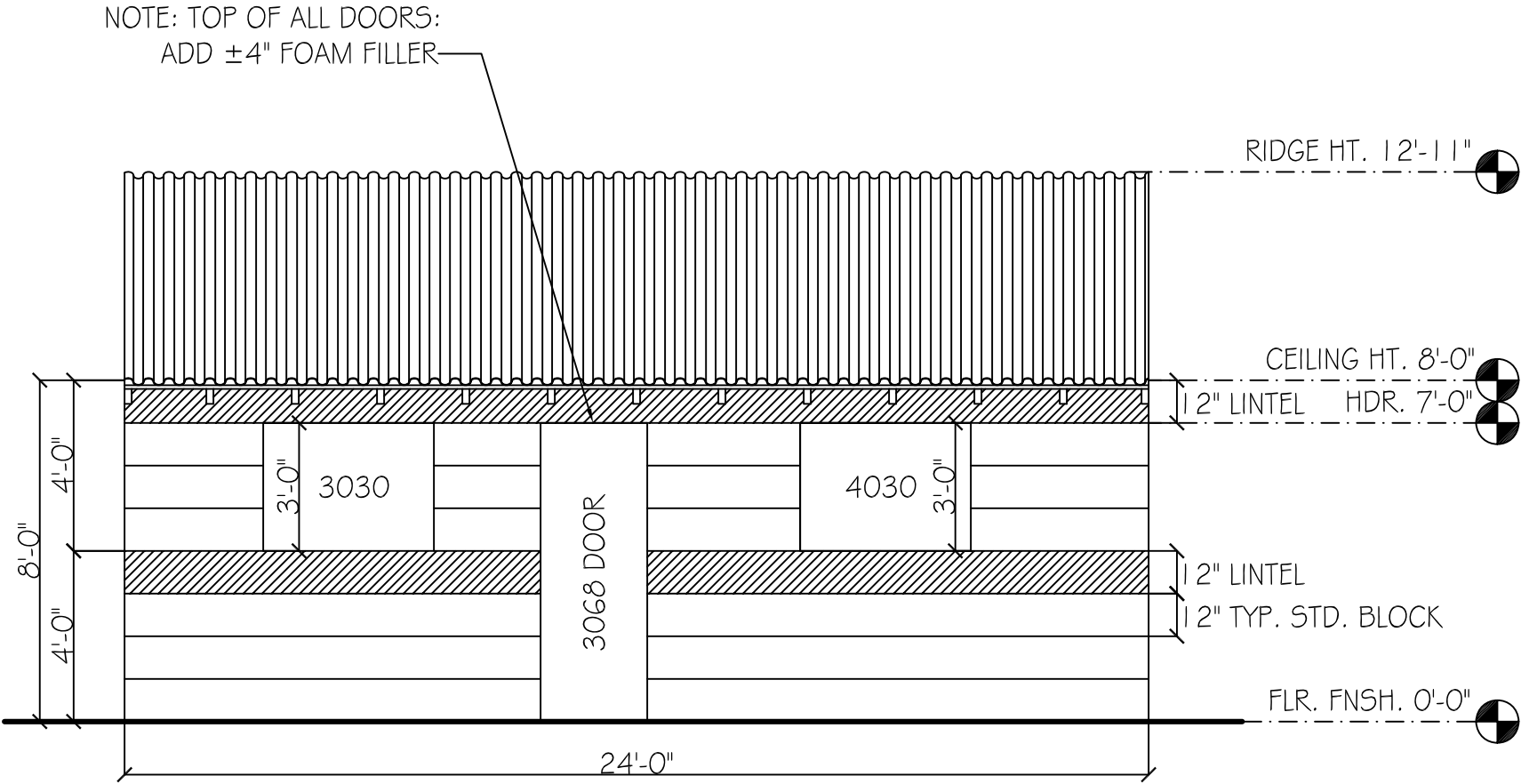


TRUSS TAILS TO
BE 12" LONG
-NO FASCIA
(12" OVERHANG
AT FRONT & BACK
OF HOME ONLY).

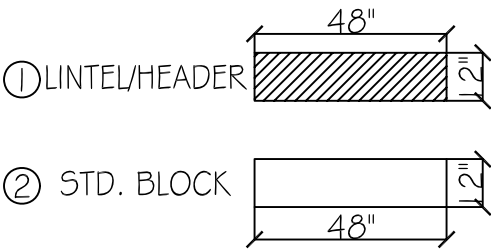
NOTE: ALL BEAMS/LINTELS FOR DOOR AND
WINDOW OPENINGS TO BE SET AT TOP ROW OF
FOAM BLOCK ONLY (8' PLATE LINE AND NET 7' HIGH
FOR HEADER/LINTEL CLEARANCE)

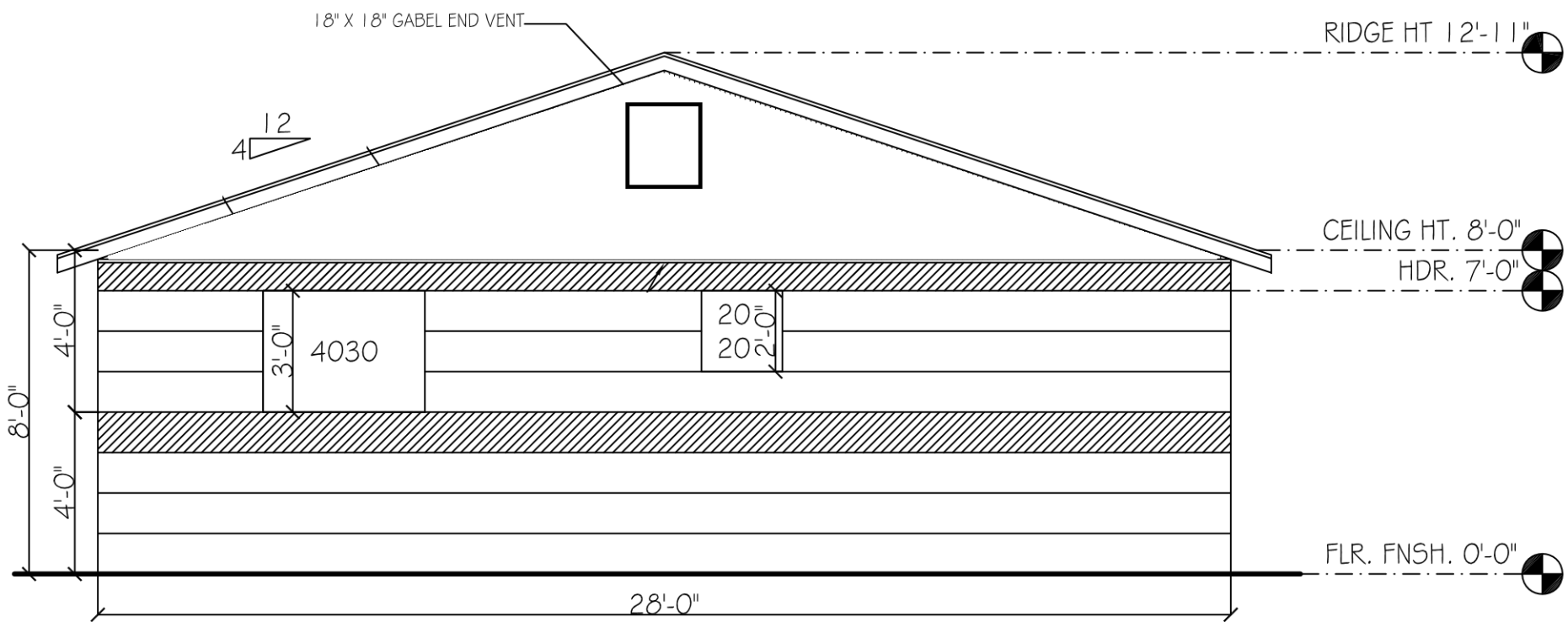
ROOF FRAMING PLAN PG. 10 OF 25

SCALE: 1/4" = 1'-0"

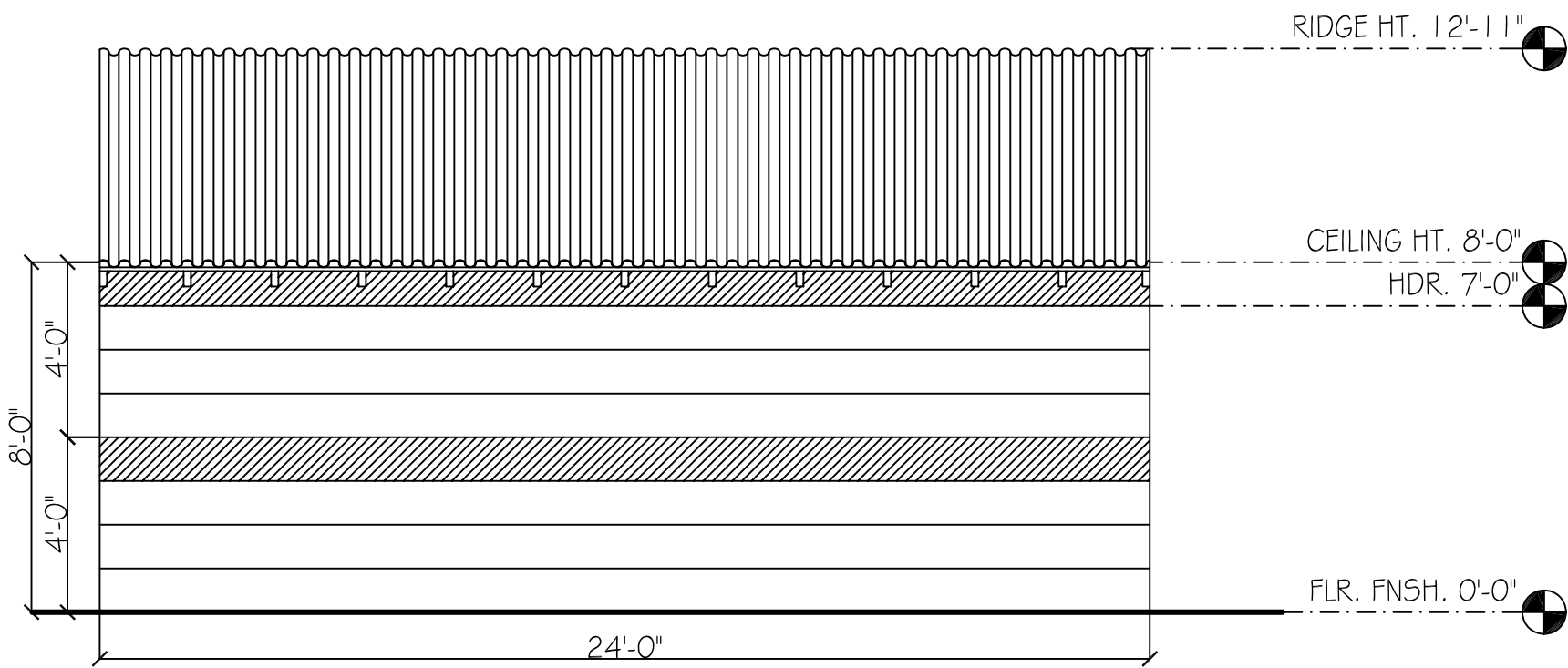


ELEV. 1
(FOAM BLOCK LAYOUT -
LINTELS/HEADERS AT 4' AND 8')
SCALE: 1/4" = 1'-0"

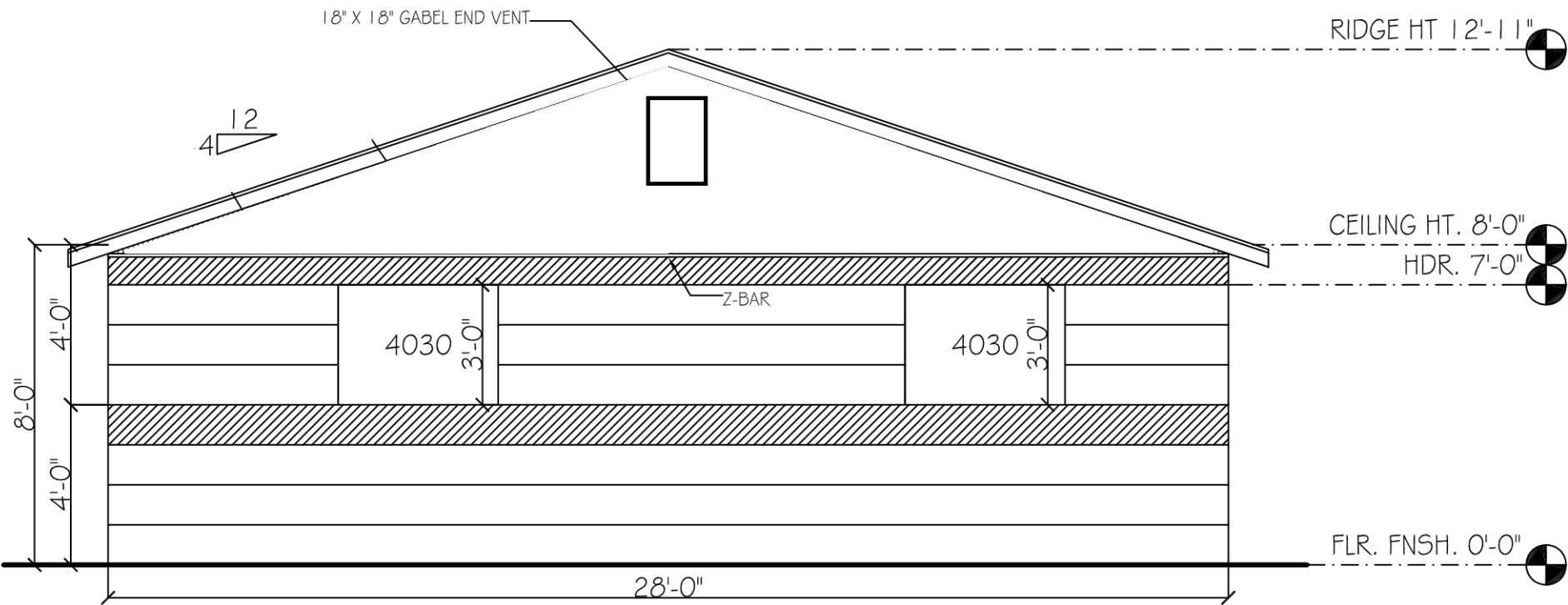




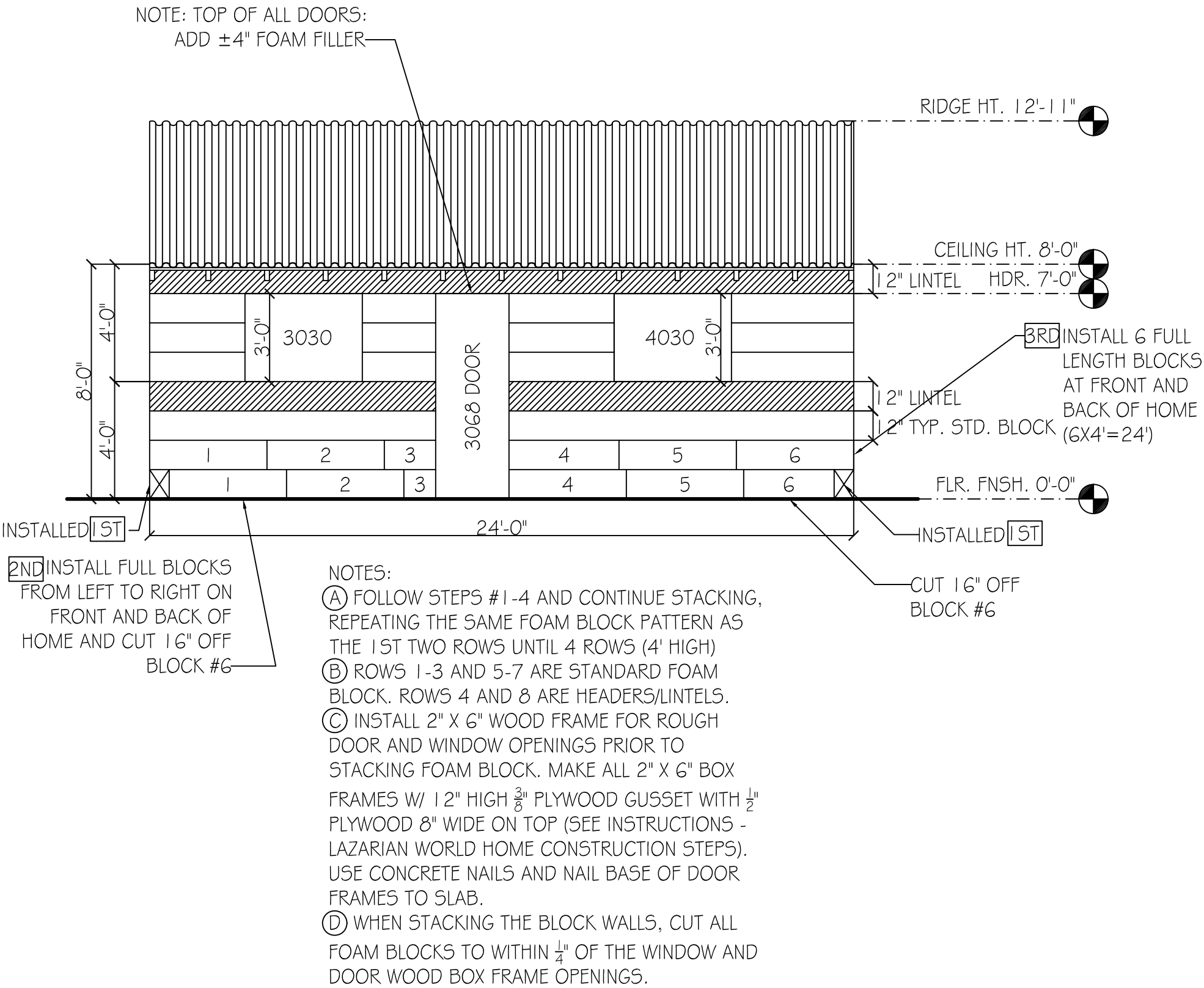
ELEV. 2 PG. 12 OF 25
SCALE: 1/4" = 1'-0"



ELEV. 3 **PG. 13 OF 25**
SCALE: 1/4" = 1'-0"

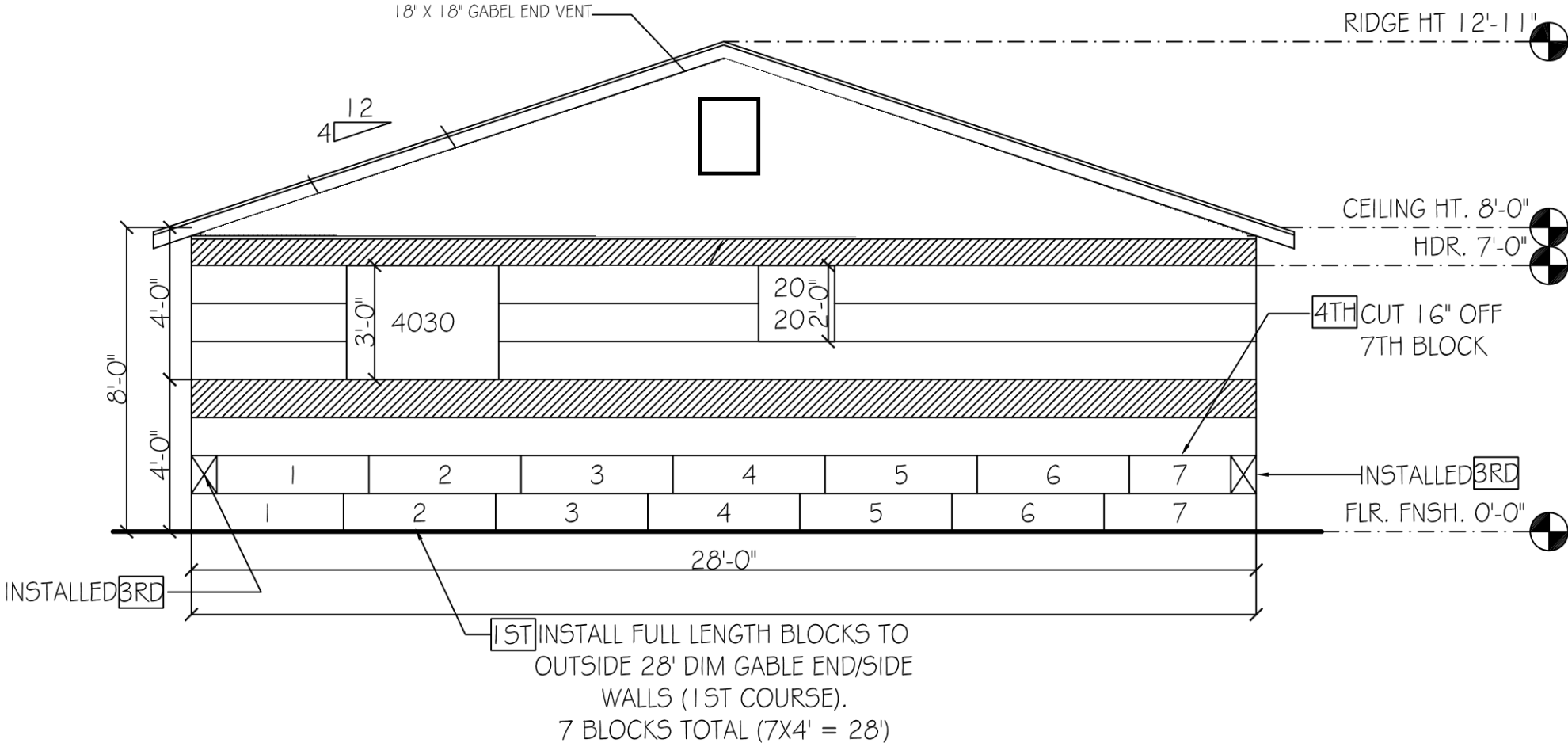


ELEV. 4 **PG. 14 OF 25**
SCALE: 1/4" = 1'-0"

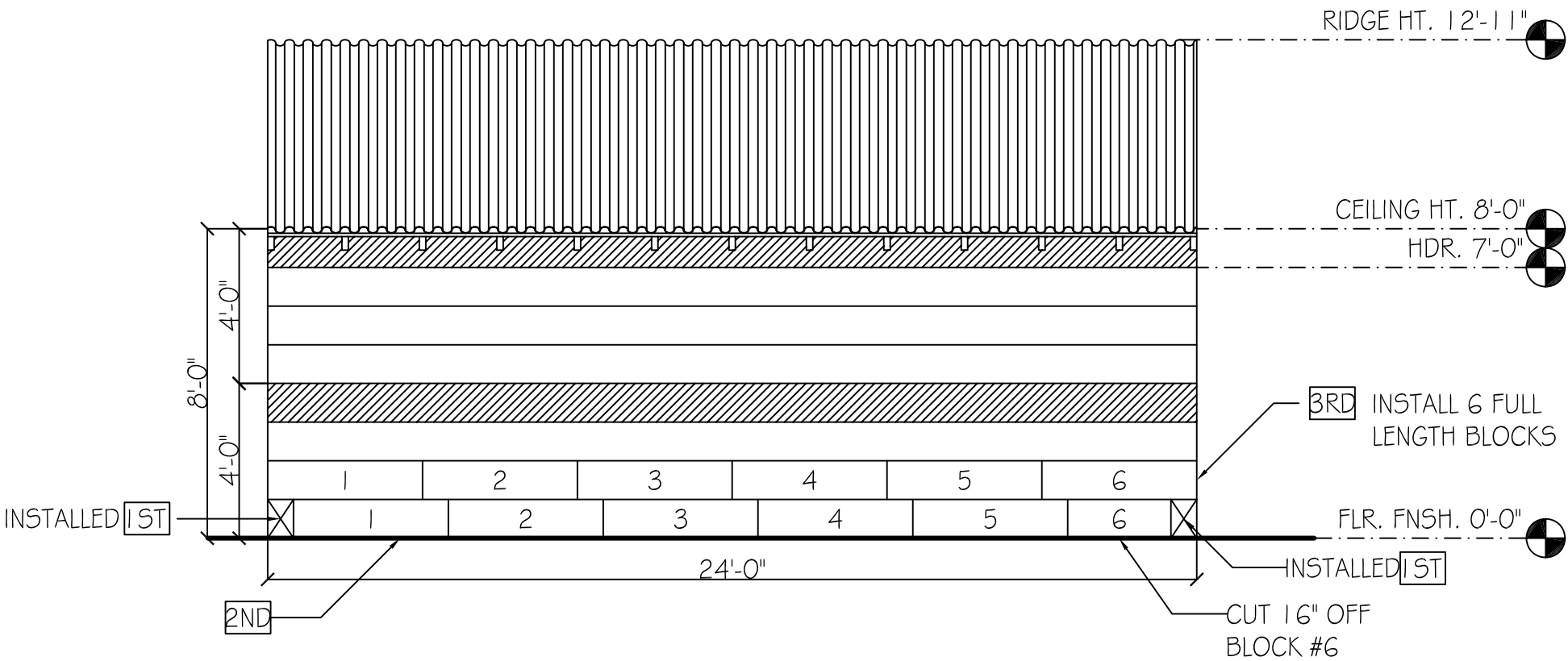


ELEV. 1
(STEPS TO STACKING FOAM
BLOCKS PRIOR TO POURING
CONCRETE IN THE WALLS)

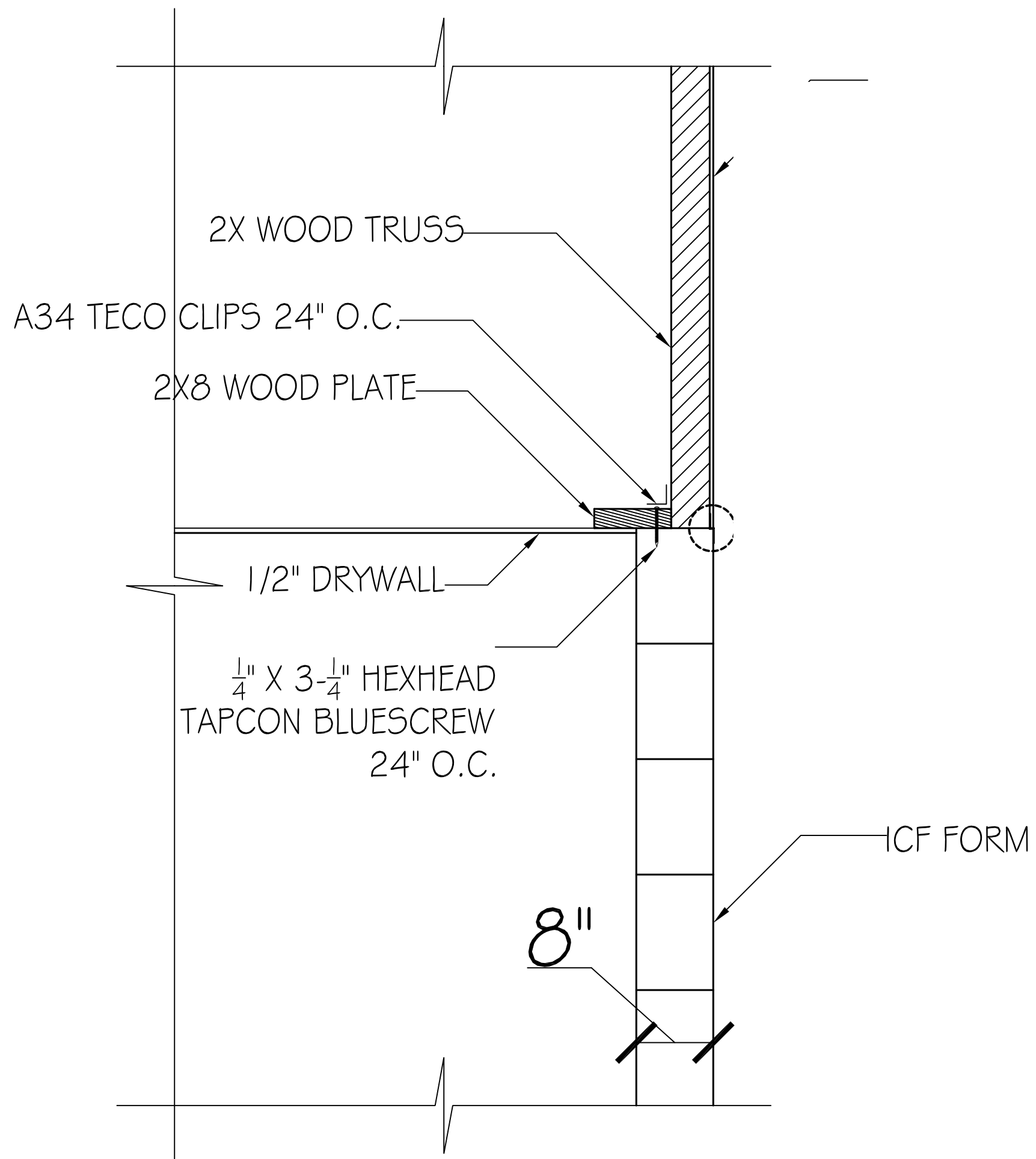
SCALE: 1/4" = 1'-0"



ELEV. 2 **PG. 16 OF 25**
SCALE: 1/4" = 1'-0"

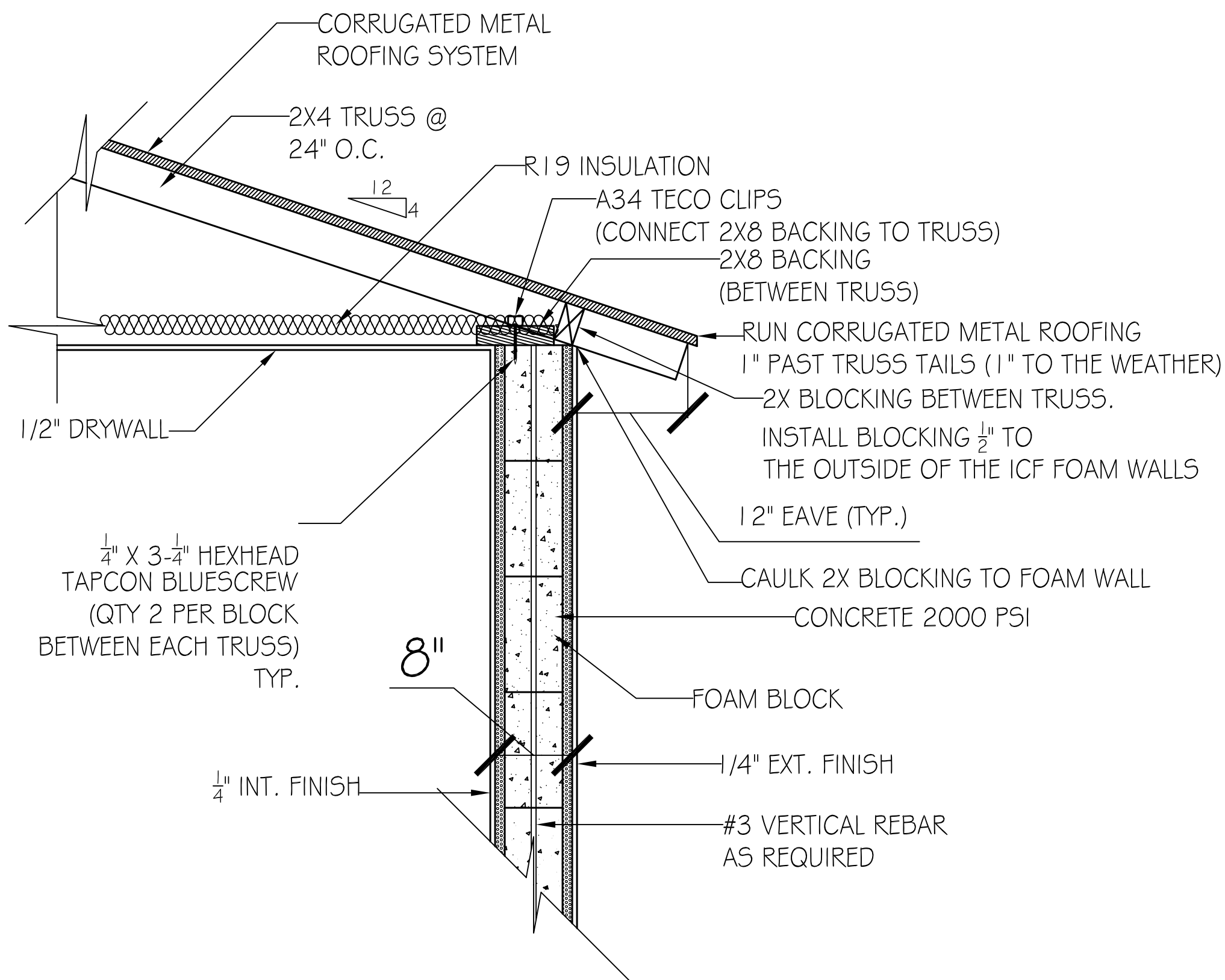


ELEV. 3 **PG. 17 OF 25**
SCALE: 1/4" = 1'-0"



DETAIL 1

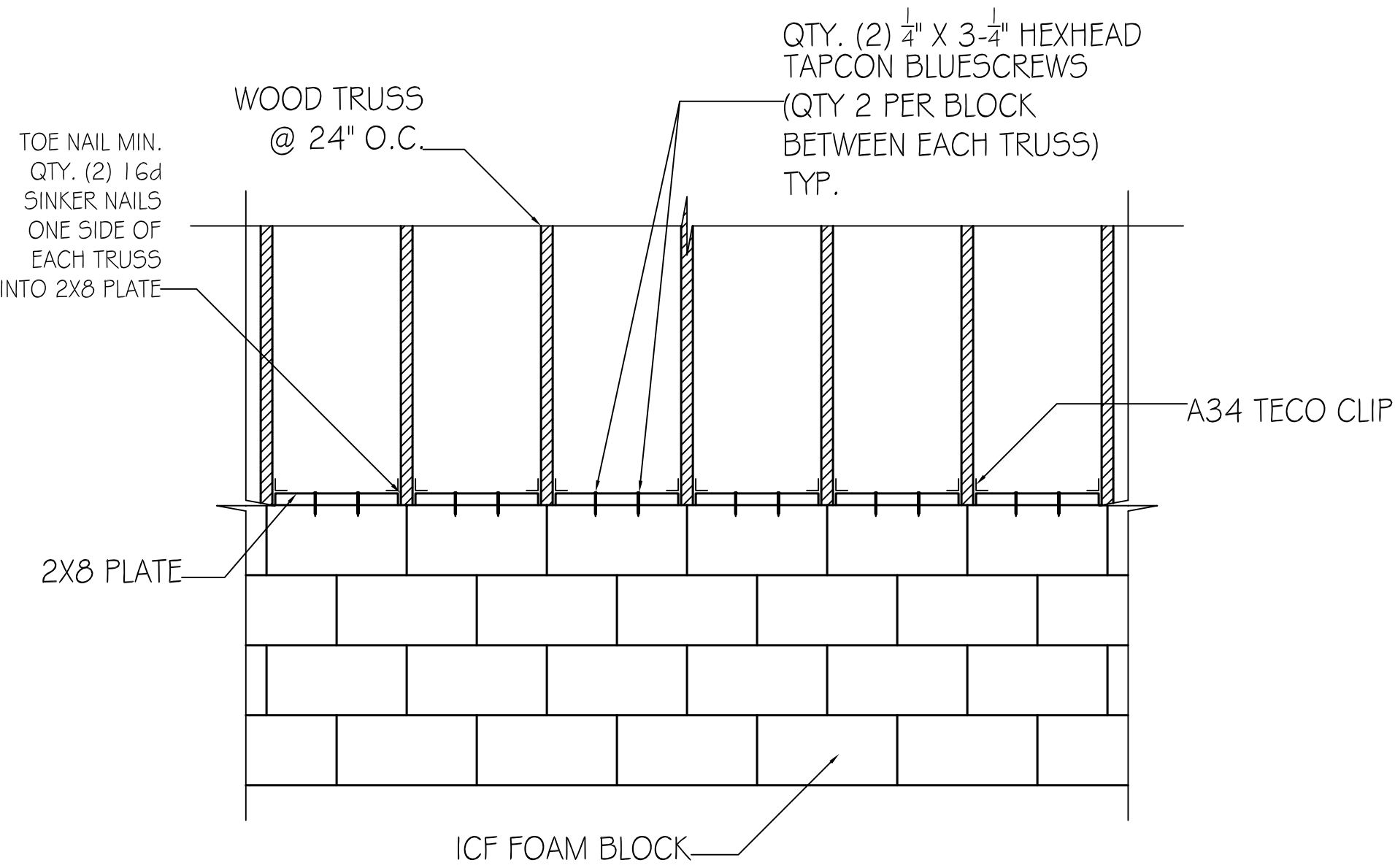
SCALE: 1/2" = 1'-0"



DETAIL 2

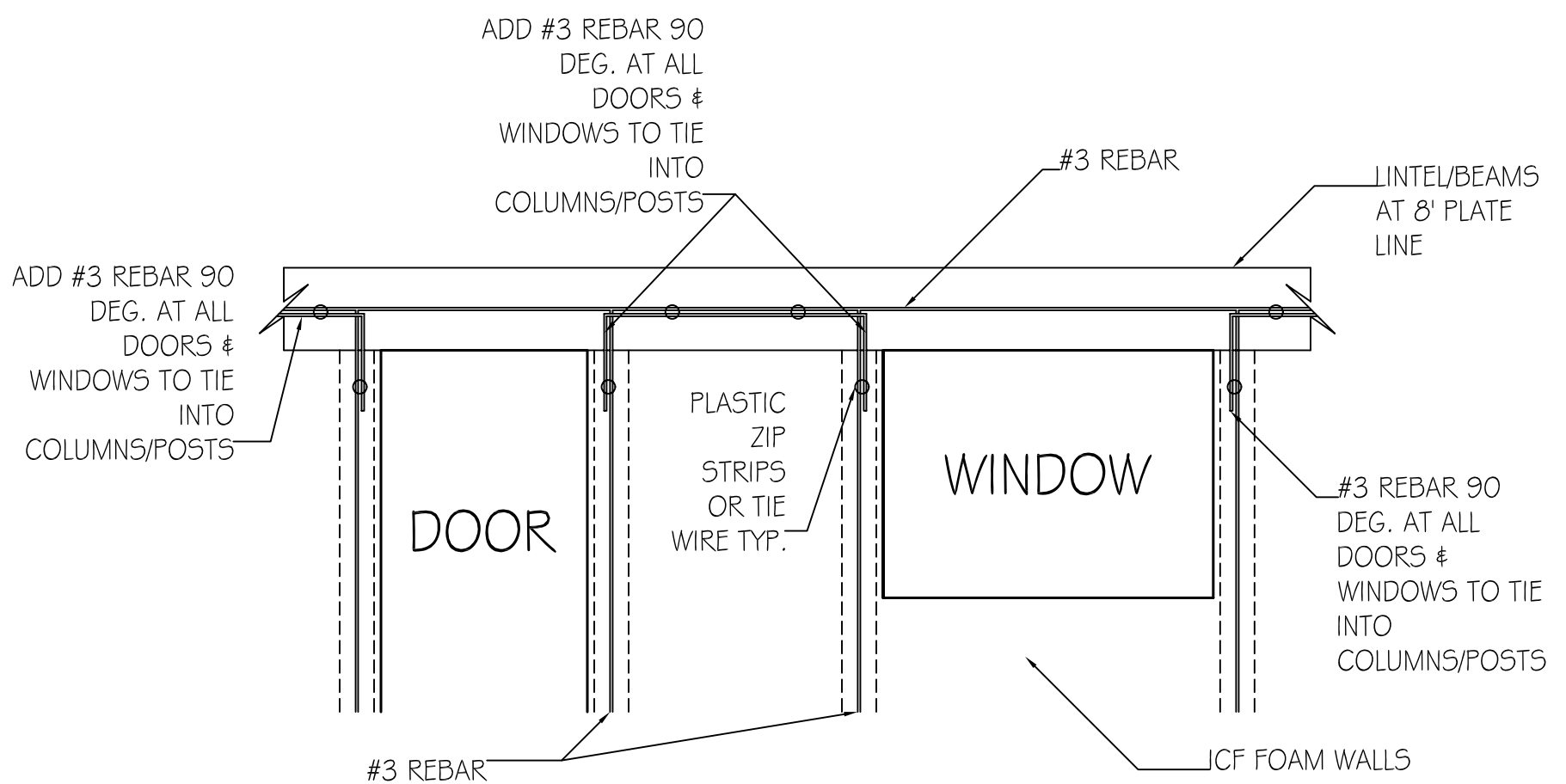
SCALE: 1/2" = 1'-0"

PG. 20 OF 25



DETAIL 3

SCALE: 1/4" = 1'-0"



90 DEG. #3 REBAR TO TIE IN WALL COLUMNS TO LINTELS/BEAMS

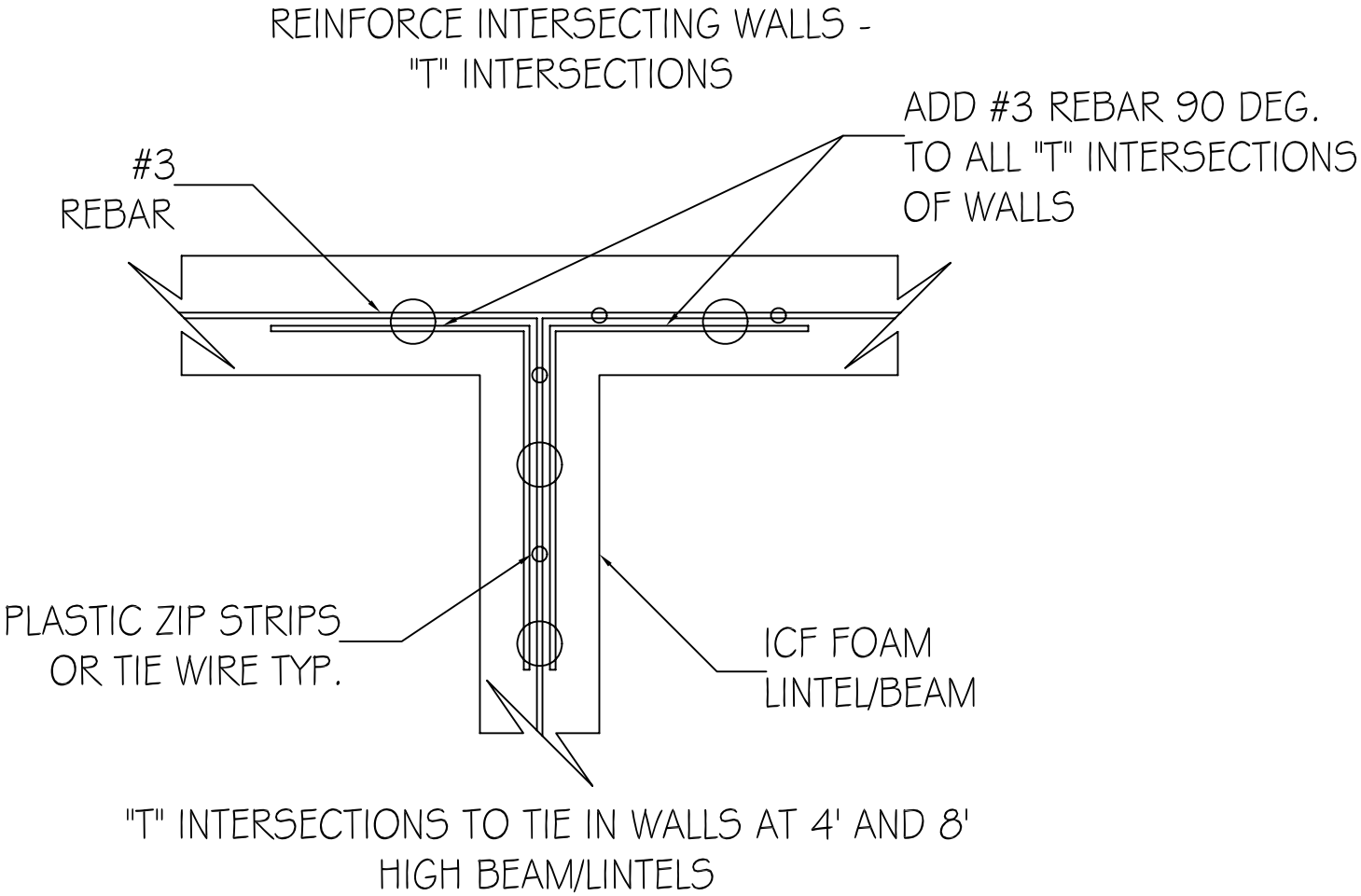
NOTE: DASHED LINES ||| DESIGNATE CONCRETE COLUMN/KING STUD AT ALL DOORS AND WINDOWS

NOTE: ALL 90 DEG. #3 REBAR PER DETAILS #4, 5 AND 6 TO BE 18" EACH SIDE/LEG.

DETAIL 4

SCALE: 1/4" = 1'-0"

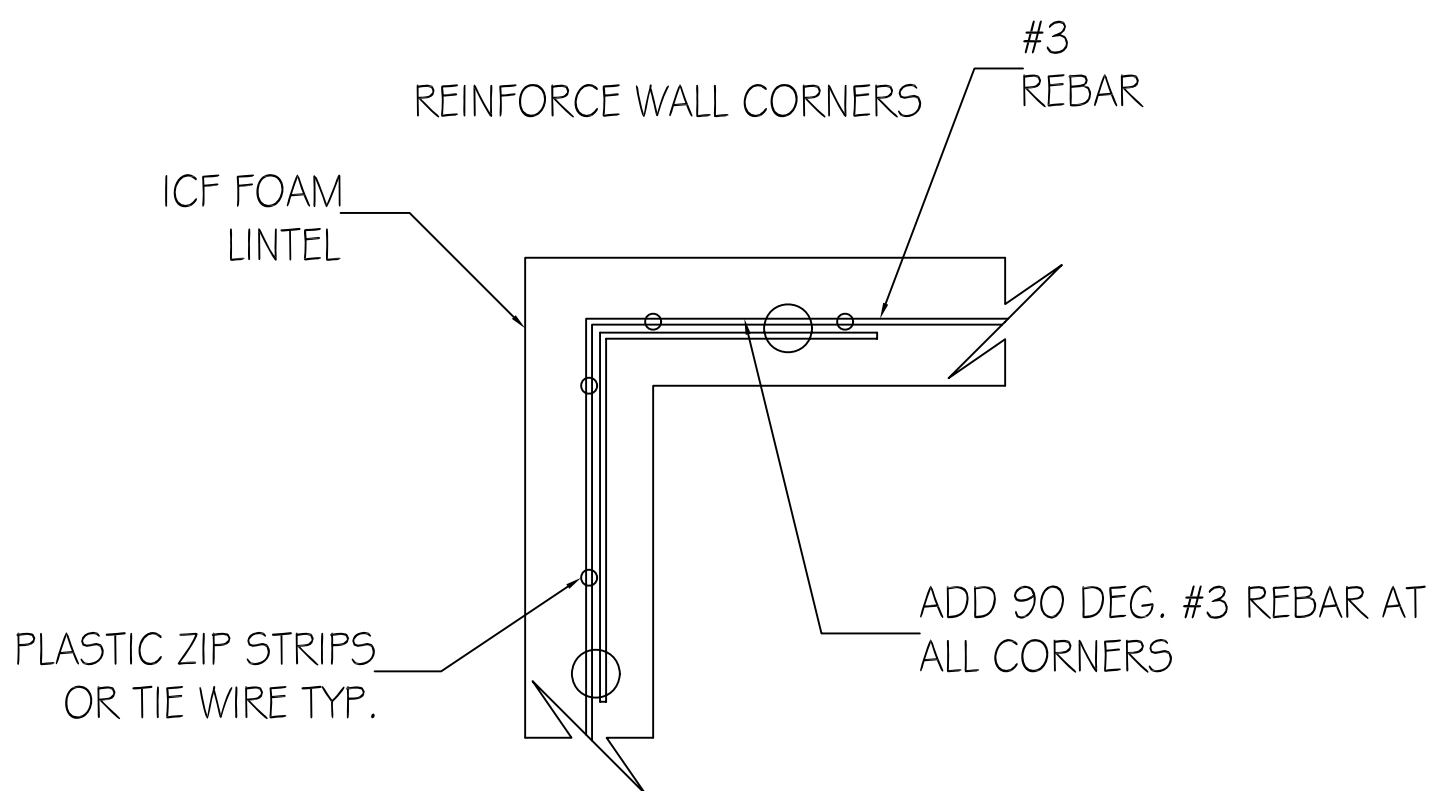
PG. 22 OF 25



DETAIL 5
(PLAN VIEW)

PG. 23 OF 25

SCALE: 1/4" = 1'-0"



INSIDE/OUTSIDE CORNERS 90 DEG. #3 REBAR TO
TIE IN WALLS AT 4' AND 8' HIGH BEAM/LINTELS

DETAIL 6 (PLAN VIEW)

SCALE: 1/4" = 1'-0"

PG. 24 OF 25



Trans ID: 215847
+7.4.01(11)-E

LUMBER SPECIFICATIONS:

SIZE	SPECIES GRADE	PANEL(S)
2x4	WF #2	1-4
2x4	WF #2	1-3
2x4	WF #2	1-4

1C LATERAL SUPPORT = 12'0" ON
1C LATERAL SUPPORT = 12'0" ON

TRUSS SPAN 24' 0.0"
LOAD DURATION INCREASE = 1.35
SPACING 24.0" O.C.

LOADING
LL (16.8)+DL (10.0) ON TOP CHORD = 26.8 PSF
ON ON BOTTOM CHORD = 7.2 PSF
TOTAL LOAD = 34.0 PSF

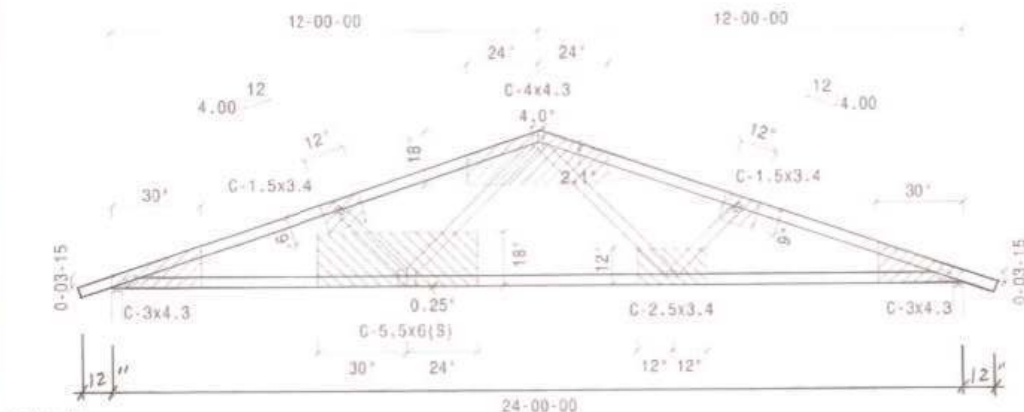
USC 07/11 SINGLE MEMBER FORCES (KIP/DOF)
T 14 -1638 S 14 -1693 W 14 -345
T 24 -1599 S 24 -1115 W 24 -512
T 34 -1599 S 34 -1693 W 34 -512
T 44 -1638 S 44 -1693 W 44 -345

LOCATION	REACTION	WFO'S AREA (SQ. IN.)
0' 0.0'	795	1.99 WF (400)
24' 0.0'	795	1.99 WF (400)

MAX LL DEFL = +0.007' (L/2895) P 12 = 0.0' L/240 = 1.171"
MAX TL DEFL = +0.198' (L/1415) P 15 = 0.0' L/180 = 1.561"
MAX HORIZ. LL DEFL = 0.021' @ 23' R 5"
MAX HORIZ. TL DEFL = 0.042' @ 23' R 5"

Max member CSI
T1 0.40 S1 0.53 W1 0.09
T2 0.37 S2 0.43 W2 0.22
T3 0.37 S3 0.53 W3 0.22
T4 0.40 S4 0.53 W4 0.09

FIELD REPAIR TO CONSTRUCT TRUSS IN FIELD, IN A TYPICAL PLATE SHOWN, PROVIDE 1/2" CDX PLYWOOD OR STRUCTURAL OSB TO EACH FACE CONNECTED WITH 10G NAILS STAGGERED AND CLINCHED AT 2" ON NET THROUGHOUT



Scale: 1/4"
JOB NAME: 24 COMMON

FILE NO.: 24 COMMON

DATE: 8/30/2007

DES. BY: MJ

SEQ.: 3596870

WARNINGS:

- Read all General Notes and Warnings before construction of trusses.
- Buttler and erection instructions should be followed for all General Notes and Warnings before construction commences.
- 2x4 compression web bracing must be installed where shown.
- All lateral force resisting elements such as temporary and permanent bracing must be designed and provided by designer of complete structure.
- Computrus assumes no responsibility for such bracing.
- No load should be applied to any component until after all bracing and fastenings are complete, and at no time should any loads greater than design loads be applied to any component.
- Computrus has no control over and assumes no responsibility for the fabrication, handling, shipment and installation of components.
- This design is furnished subject to the limitation on truss designs set forth by TPI in TPI-01 or TPI-01A or TPI-01B or TPI-01C or TPI-01D or TPI-01E or TPI-01F or TPI-01G or TPI-01H or TPI-01I or TPI-01J or TPI-01K or TPI-01L or TPI-01M or TPI-01N or TPI-01O or TPI-01P or TPI-01Q or TPI-01R or TPI-01S or TPI-01T or TPI-01U or TPI-01V or TPI-01W or TPI-01X or TPI-01Y or TPI-01Z or TPI-01AA or TPI-01AB or TPI-01AC or TPI-01AD or TPI-01AE or TPI-01AF or TPI-01AG or TPI-01AH or TPI-01AI or TPI-01AJ or TPI-01AK or TPI-01AL or TPI-01AM or TPI-01AN or TPI-01AO or TPI-01AP or TPI-01AQ or TPI-01AR or TPI-01AS or TPI-01AT or TPI-01AU or TPI-01AV or TPI-01AW or TPI-01AX or TPI-01AY or TPI-01AZ or TPI-01BA or TPI-01BB or TPI-01BC or TPI-01BD or TPI-01BE or TPI-01BF or TPI-01BG or TPI-01BH or TPI-01BI or TPI-01BJ or TPI-01BK or TPI-01BL or TPI-01BM or TPI-01BN or TPI-01BO or TPI-01BP or TPI-01BQ or TPI-01BR or TPI-01BS or TPI-01BT or TPI-01BU or TPI-01BV or TPI-01BW or TPI-01BX or TPI-01BY or TPI-01BZ or TPI-01CA or TPI-01CB or TPI-01CC or TPI-01CD or TPI-01CE or TPI-01CF or TPI-01CG or TPI-01CH or TPI-01CI or TPI-01CJ or TPI-01CK or TPI-01CL or TPI-01CM or TPI-01CN or TPI-01CO or TPI-01CP or TPI-01CQ or TPI-01CR or TPI-01CS or TPI-01CT or TPI-01CU or TPI-01CV or TPI-01CW or TPI-01CX or TPI-01CY or TPI-01CZ or TPI-01DA or TPI-01DB or TPI-01DC or TPI-01DD or TPI-01DE or TPI-01DF or TPI-01DG or TPI-01DH or TPI-01DI or TPI-01DJ or TPI-01DK or TPI-01DL or TPI-01DM or TPI-01DN or TPI-01DO or TPI-01DP or TPI-01DQ or TPI-01DR or TPI-01DS or TPI-01DT or TPI-01DU or TPI-01DV or TPI-01DW or TPI-01DX or TPI-01DY or TPI-01DZ or TPI-01EA or TPI-01EB or TPI-01EC or TPI-01ED or TPI-01EE or TPI-01EF or TPI-01EG or TPI-01EH or TPI-01EI or TPI-01EJ or TPI-01EK or TPI-01EL or TPI-01EM or TPI-01EN or TPI-01EO or TPI-01EP or TPI-01EQ or TPI-01ER or TPI-01ES or TPI-01ET or TPI-01EU or TPI-01EV or TPI-01EW or TPI-01EX or TPI-01EY or TPI-01EZ or TPI-01FA or TPI-01FB or TPI-01FC or TPI-01FD or TPI-01FE or TPI-01FF or TPI-01FG or TPI-01FH or TPI-01FI or TPI-01FJ or TPI-01FK or TPI-01FL or TPI-01FM or TPI-01FN or TPI-01FO or TPI-01FP or TPI-01FQ or TPI-01FR or TPI-01FS or TPI-01FT or TPI-01FU or TPI-01FV or TPI-01FW or TPI-01FX or TPI-01FY or TPI-01FZ or TPI-01GA or TPI-01GB or TPI-01GC or TPI-01GD or TPI-01GE or TPI-01GF or TPI-01GG or TPI-01GH or TPI-01GI or TPI-01GJ or TPI-01GK or TPI-01GL or TPI-01GM or TPI-01GN or TPI-01GO or TPI-01GP or TPI-01GQ or TPI-01GR or TPI-01GS or TPI-01GT or TPI-01GU or TPI-01GV or TPI-01GW or TPI-01GX or TPI-01GY or TPI-01GZ or TPI-01HA or TPI-01HB or TPI-01HC or TPI-01HD or TPI-01HE or TPI-01HF or TPI-01HG or TPI-01HH or TPI-01HI or TPI-01HJ or TPI-01HK or TPI-01HL or TPI-01HM or TPI-01HN or TPI-01HO or TPI-01HP or TPI-01HQ or TPI-01HR or TPI-01HS or TPI-01HT or TPI-01HU or TPI-01HV or TPI-01HW or TPI-01HX or TPI-01HY or TPI-01HZ or TPI-01IA or TPI-01IB or TPI-01IC or TPI-01ID or TPI-01IE or TPI-01IF or TPI-01IG or TPI-01IH or TPI-01II or TPI-01IJ or TPI-01IK or TPI-01IL or TPI-01IM or TPI-01IN or TPI-01IO or TPI-01IP or TPI-01IQ or TPI-01IR or TPI-01IS or TPI-01IT or TPI-01IU or TPI-01IV or TPI-01IW or TPI-01IX or TPI-01IY or TPI-01IZ or TPI-01JA or TPI-01JB or TPI-01JC or TPI-01JD or TPI-01JE or TPI-01JF or TPI-01JG or TPI-01JH or TPI-01JI or TPI-01JJ or TPI-01JK or TPI-01JL or TPI-01JM or TPI-01JN or TPI-01JO or TPI-01JP or TPI-01JQ or TPI-01JR or TPI-01JS or TPI-01JT or TPI-01JU or TPI-01JV or TPI-01JW or TPI-01JX or TPI-01JY or TPI-01JZ or TPI-01KA or TPI-01KB or TPI-01KC or TPI-01KD or TPI-01KE or TPI-01KF or TPI-01KG or TPI-01KH or TPI-01KI or TPI-01KJ or TPI-01KK or TPI-01KL or TPI-01KM or TPI-01KN or TPI-01KO or TPI-01KP or TPI-01KQ or TPI-01KR or TPI-01KS or TPI-01KT or TPI-01KU or TPI-01KV or TPI-01KW or TPI-01KX or TPI-01KY or TPI-01KZ or TPI-01LA or TPI-01LB or TPI-01LC or TPI-01LD or TPI-01LE or TPI-01LF or TPI-01LG or TPI-01LH or TPI-01LI or TPI-01LJ or TPI-01LK or TPI-01LL or TPI-01LM or TPI-01LN or TPI-01LO or TPI-01LP or TPI-01LQ or TPI-01LR or TPI-01LS or TPI-01LT or TPI-01LU or TPI-01LV or TPI-01LW or TPI-01LX or TPI-01LY or TPI-01LZ or TPI-01MA or TPI-01MB or TPI-01MC or TPI-01MD or TPI-01ME or TPI-01MF or TPI-01MG or TPI-01MH or TPI-01MI or TPI-01MJ or TPI-01MK or TPI-01ML or TPI-01MN or TPI-01MO or TPI-01MP or TPI-01MQ or TPI-01MR or TPI-01MS or TPI-01MT or TPI-01MU or TPI-01MV or TPI-01MW or TPI-01MX or TPI-01MY or TPI-01MZ or TPI-01NA or TPI-01NB or TPI-01NC or TPI-01ND or TPI-01NE or TPI-01NF or TPI-01NG or TPI-01NH or TPI-01NI or TPI-01NJ or TPI-01NK or TPI-01NL or TPI-01NM or TPI-01NO or TPI-01NP or TPI-01NQ or TPI-01NR or TPI-01NS or TPI-01NT or TPI-01NU or TPI-01NV or TPI-01NW or TPI-01NX or TPI-01NY or TPI-01NZ or TPI-01OA or TPI-01OB or TPI-01OC or TPI-01OD or TPI-01OE or TPI-01OF or TPI-01OG or TPI-01OH or TPI-01OI or TPI-01OJ or TPI-01OK or TPI-01OL or TPI-01OM or TPI-01ON or TPI-01OO or TPI-01OP or TPI-01OQ or TPI-01OR or TPI-01OS or TPI-01OT or TPI-01OU or TPI-01OV or TPI-01OW or TPI-01OX or TPI-01OY or TPI-01OZ or TPI-01PA or TPI-01PB or TPI-01PC or TPI-01PD or TPI-01PE or TPI-01PF or TPI-01PG or TPI-01PH or TPI-01PI or TPI-01PJ or TPI-01PK or TPI-01PL or TPI-01PM or TPI-01PN or TPI-01PO or TPI-01PP or TPI-01PQ or TPI-01PR or TPI-01PS or TPI-01PT or TPI-01PU or TPI-01PV or TPI-01PW or TPI-01PX or TPI-01PY or TPI-01PZ or TPI-01QA or TPI-01QB or TPI-01QC or TPI-01QD or TPI-01QE or TPI-01QF or TPI-01QG or TPI-01QH or TPI-01QI or TPI-01QJ or TPI-01QK or TPI-01QL or TPI-01QM or TPI-01QN or TPI-01QO or TPI-01QP or TPI-01QQ or TPI-01QR or TPI-01QS or TPI-01QT or TPI-01QU or TPI-01QV or TPI-01QW or TPI-01QX or TPI-01QY or TPI-01QZ or TPI-01RA or TPI-01RB or TPI-01RC or TPI-01RD or TPI-01RE or TPI-01RF or TPI-01RG or TPI-01RH or TPI-01RI or TPI-01RJ or TPI-01RK or TPI-01RL or TPI-01RM or TPI-01RN or TPI-01RO or TPI-01RP or TPI-01RQ or TPI-01RR or TPI-01RS or TPI-01RT or TPI-01RU or TPI-01RV or TPI-01RW or TPI-01RX or TPI-01RY or TPI-01RZ or TPI-01SA or TPI-01SB or TPI-01SC or TPI-01SD or TPI-01SE or TPI-01SF or TPI-01SG or TPI-01SH or TPI-01SI or TPI-01SJ or TPI-01SK or TPI-01SL or TPI-01SM or TPI-01SN or TPI-01SO or TPI-01SP or TPI-01SQ or TPI-01SR or TPI-01SS or TPI-01ST or TPI-01SU or TPI-01SV or TPI-01SW or TPI-01SX or TPI-01SY or TPI-01SZ or TPI-01TA or TPI-01TB or TPI-01TC or TPI-01TD or TPI-01TE or TPI-01TF or TPI-01TG or TPI-01TH or TPI-01TI or TPI-01TJ or TPI-01TK or TPI-01TL or TPI-01TM or TPI-01TN or TPI-01TO or TPI-01TP or TPI-01TQ or TPI-01TR or TPI-01TS or TPI-01TT or TPI-01TU or TPI-01TV or TPI-01TW or TPI-01TX or TPI-01TY or TPI-01TZ or TPI-01UA or TPI-01UB or TPI-01UC or TPI-01UD or TPI-01UE or TPI-01UF or TPI-01UG or TPI-01UH or TPI-01UI or TPI-01UJ or TPI-01UK or TPI-01UL or TPI-01UM or TPI-01UN or TPI-01UO or TPI-01UP or TPI-01UQ or TPI-01UR or TPI-01US or TPI-01UT or TPI-01UU or TPI-01UV or TPI-01UW or TPI-01UX or TPI-01UY or TPI-01UZ or TPI-01VA or TPI-01VB or TPI-01VC or TPI-01VD or TPI-01VE or TPI-01VF or TPI-01VG or TPI-01VH or TPI-01VI or TPI-01VJ or TPI-01VK or TPI-01VL or TPI-01VM or TPI-01VN or TPI-01VO or TPI-01VP or TPI-01VQ or TPI-01VR or TPI-01VS or TPI-01VT or TPI-01VU or TPI-01VV or TPI-01VW or TPI-01VX or TPI-01VY or TPI-01VZ or TPI-01WA or TPI-01WB or TPI-01WC or TPI-01WD or TPI-01WE or TPI-01WF or TPI-01WG or TPI-01WH or TPI-01WI or TPI-01WJ or TPI-01WK or TPI-01WL or TPI-01WM or TPI-01WN or TPI-01WO or TPI-01WP or TPI-01WQ or TPI-01WR or TPI-01WS or TPI-01WT or TPI-01WU or TPI-01WV or TPI-01WW or TPI-01WX or TPI-01WY or TPI-01WZ or TPI-01XA or TPI-01XB or TPI-01XC or TPI-01XD or TPI-01XE or TPI-01XF or TPI-01XG or TPI-01XH or TPI-01XI or TPI-01XJ or TPI-01XK or TPI-01XL or TPI-01XM or TPI-01XN or TPI-01XO or TPI-01XP or TPI-01XQ or TPI-01XR or TPI-01XS or TPI-01XT or TPI-01XU or TPI-01XV or TPI-01XW or TPI-01XX or TPI-01XY or TPI-01XZ or TPI-01YA or TPI-01YB or TPI-01YC or TPI-01YD or TPI-01YE or TPI-01YF or TPI-01YG or TPI-01YH or TPI-01YI or TPI-01YJ or TPI-01YK or TPI-01YL or TPI-01YM or TPI-01YN or TPI-01YO or TPI-01YP or TPI-01YQ or TPI-01YR or TPI-01YS or TPI-01YT or TPI-01YU or TPI-01YV or TPI-01YW or TPI-01YX or TPI-01YY or TPI-01YZ or TPI-01ZA or TPI-01ZB or TPI-01ZC or TPI-01ZD or TPI-01ZE or TPI-01ZF or TPI-01ZG or TPI-01ZH or TPI-01ZI or TPI-01ZJ or TPI-01ZK or TPI-01ZL or TPI-01ZM or TPI-01ZN or TPI-01ZO or TPI-01ZP or TPI-01ZQ or TPI-01ZR or TPI-01ZS or TPI-01ZT or TPI-01ZU or TPI-01ZV or TPI-01ZW or TPI-01ZX or TPI-01ZY or TPI-01ZZ

General Notes, unless otherwise noted:

- Design to support loads as shown.
- Design assumes the top and bottom chords to be laterally braced at 2' O.C. and at 12' O.C. respectively unless braced throughout their length by continuous sheathing.
- 2x4 bracing or other bracing required where shown.
- Installation of truss is the responsibility of the respective contractor.
- Design assumes trusses are to be used in a non-corrosive environment and are for dry condition of use.
- Design assumes full bearing at all supports shown. Shim or wedge if necessary.
- Design assumes adequate drainage is provided.
- Holes shall be located on both sides of truss, and placed so their center lines coincide with joint center lines.
- Drawings shall be in inches.
- 1/2" basic design space of the Computrus Plate, indicated by the prefix "C", see L.L.B.O. 42.11.
- The Computrus Nail Section Rate is indicated by the prefix "CN", the designator (N) indicates 15 ga. material is used. All others are 20 ga.

LAZARIAN WORLD HOME

(Parts and Equipment List)

NOTE - THE FOLLOWING ARE QUANTITIES FOR ONE (1) HOME.

1. Entry door - Home Depot SKU # 208588 Left Hand Entry - pre hung - Fanlite style 32"X 80" R.O. 33 3/4" X 82" (Jambs 4 9/16" wide with 2 3/8" backset for Quikset key bore style lock).

Qty (1) Exterior Door and Key Lock .(Qty - 1 Left Hand)

2. Interior Doors - Home Depot SKU # 699051 Left Hand and SKU # 699065 Right Hand 32" X 80" pre hung slab doors, R.O. 33 3/8 X 81 1/2" (same jamb width and Quikset privacy bore style lock - backset as entry doors)

Qty (3) Interior doors and Privacy Locksets. (Qty -1 Left Hand and Qty - 2 Right Hand)

3. Living Room and Bedroom Windows - Jeldwen 4030 Vinyl sliding/bypass windows RO 47 1/2"W X 35 1/2"H. Two in living room and one in each bedroom. Home depot special order with NO tabs - order replacement type windows)

Qty (4) 4030 Windows.

4. Bath Window- Jeldwen 2020 Vinyl sliding/bypass window RO 23 1/2"W X 23 1/2"H. Bath window with OBSCURE glass. Home Depot special order with NO nailing tabs - order replacement type windows).

Qty (1) 2020 Window.

5. Kitchen Window- Jeldwen 3030 Vinyl double hung window RO 35 1/2"W X 35 1/2"H. Kitchen window. Home Depot special order with no nailing tabs - order replacement type windows

Qty (1) 3030 Window. Note: This window requires a min 1/2" chipping of concrete from columns to fit RO.

NOTE: ALL windows dual pane. All glass is clear - bath is obscure glass.

6. Foam Block - Ext Lin ft 104'--- Int Lin ft 60' ---- Total Lin Ft = 164' X 8' = 1,312 lin ft. (8' PLATE LINE THROUGH OUT) Order 1500 lin ft

ORDER: STANDARD CONCRETE FORM - 260 pieces

LINTEL CONCRETE FORM - 90 pieces (lintel is at 4' mid height and 8' top plate)

LINTEL HOLE PLUGS - 310 pieces (every other hole plus every hole at headers)

LINTEL END GATE - 60 pieces (headers and corner end runs)

NOTE: ALL FOAM MATERIAL TO BE FIREPROOF

7. CONCRETE SLAB - 24' X 28' - footings 12" X 24" deep w/#3 T&B continuous at EXTERIOR walls only. Install a 4" concrete slab w/#3 - 24" OC both ways. Alt: Use 6-6-10-10 WWM .Thicken slab to 8" under interior/ non bearing walls. Install Qty (1)- #3 rebar, 3' length 16"OC vertical in all EXTERIOR walls only and embed 12" into the wet concrete slab/footing: tie to top #3 bar in footing . When this is done, 2' of the #3 rebar will be exposed vertically. INTERIOR walls -after slab is poured and prior to installing ICF foam block at interior walls, drill and epoxy #3 rebar 3' long at 16" OC 6" into slab. IMPORTANT - Layout of ALL vertical rebar is 4" IN from OUTSIDE edge of slab, including corners .

Qty: (8 double tubes) two part EPOXY - caulking gun)

Qty: (3) - 5/8" masonry/concrete drill bits - NOTE: end of bit to fit 1/2" roto hammer drill

Qty: (800 sq ft) 6 mil visqueen (1 box) - moisture barrier under concrete slab

Qty: (2,500 lin ft #3 rebar) - 200 lin ft horizontal in footings, including non bearing wall thicken slab + 2,300 lin ft #3 rebar vertical in walls.

Qty: (750 sq ft) 6-6-10-10 wire mesh under slab

8. Install lintels at 4' , and 8' high and all lintels/ headers to have 1- #3 continuous horizontal. Install 1- #3 bar at all corners 90 degrees and lap rebar 12" - 18"". Walls to be poured in 2 pours - 4' mid height and 8' top out. ALL int and ext ICF foam walls to be 8' high.

9. 2"X4" WOOD TRUSS - 24" OC. There are Qty (13) 2" X 4" wood truss 's per home. Design for snow load (if required). The truss's bear at 28' to the outside edge of the ext wall, PLUS 12" tails/overhangs each end. Total truss length with 12" overhangs is 30'. The trusses should be designed for a 28' free span. The gable ends are at the side of the home. It is best to install 2"X4" wood backing 24" OC into the truss's (backing for the T1-11 at gable ends) prior to installing the trusses. The truss's at the gable ends are held in 1" from the outside wall and have 3/8" T 1-11 plywood on the exterior from the 8' plate line to the ridge. All truss's are attached to the 2"X 8"wood top plate by teco clips and toe nailing 2 - 16d nails to the side of 2"X 8" wood backing. ALTERNATE: Instead of Teco clips and toe nailing 16d nails to connect the trusses to the 2"X8" top plate, USE Qty (2) Simpson S/H3 Hurricane Ties - one to each side of each truss. The plans indicate the 2"X 8" wood backing is connected/screwed with 3 1/4" blue screws into the top of the concrete beam/lintel at the ICF form and held in to the interior 2" to provide backing for drywall nailing. ALTERNATE to connecting the 2X8" plate to the concrete beam at 8' plate line: Install 5/8" anchor bolts (layout so as to avoid trusses), with Simpson bp 5/8" square washers, into the 2'X8" top plate and place in wet concrete at the 8' plate line lintel/concrete beam immediately after pouring ... pressing the anchor bolts into wet concrete. After concrete is set/hard, then cut notches for truss placement. ALL truss's sit directly on the ICF forms and are connected at the side of the bottom cord to the 2"X 8" wood backing. The 2" X 8" wood backing is continuous on the gable end wall and cut so as to create a slot for the truss's on the front and back walls. Screw 1/2" drywall to bottom of truss for ceiling with drywall screws and to 2"X 8" backing at 8' plate line for ALL exterior walls. Install 1/2" plywood backing for drywall nailing at interior walls.

Qty: (13) 2X4 wood truss's - bearing at 28' long + 12" tails at each end - (total length 30' each truss). 1" camber in each truss

Qty: (8) Sheets 3/8" T1 -11 Resawn plywood - no grooves - for gable ends (Best to Install Prior to installing Corrugated Metal Roofing)

Qty: (250 sq ft) - Tyvek 3' wide sheets

Qty: (60 lin ft) Z bar flashing per Detail 1 of plans - Z bar (3"X 1"X 2")

Qty: (1 box) 8d sinker nails for nailing gun

Qty: (1 box) 16d - 3 1/2" sinker nails for nailing gun

Qty: (130 lin ft 2X8 #2 Doug Fir) - connect truss and backing for drywall at exterior walls.

Qty: (300 lin ft 2X4 #2 Doug Fir) -for blocking between truss's at plate line, ridge line, corrugated roof lap line at pitch , etc.

Qty : (60) Teco clips with nails

Qty: (100) 1/4" Tapcon masonry hex head blue screws - 5" long

Qty: (200) 1/4" Tapcon masonry hex head blue screws- 3 1/4" long

Qty: (150) 1/4" Tapcon masonry hex head blue screws - 2 3/4" long

Qty: (3) extra drill bits for 1/4" masonry blue screws (3/16" bits - long to drill for 5" screws)

Qty: (52) Simpson S/H3 Hurricane Ties (Alternate connection - anchoring ends of trusses to 2"X8" top plate)

Qty: (54) 5/8"X8" anchor bolts with Simpson bp 5/8" square washers and nuts (Alternate method of anchoring 2" X 8" wood top plate 24" OC to concrete beam at 8' high)

10. CORRUGATED METAL ROOF- screw through metal to wood truss. Use self sealing screws. Overlap roof panels min 24" on the pitch side, with 13" overhangs at the front and back of home (12" plus 1" past truss tails).

Qty (50 sheets) - corrugated steel roof - 29 gauge galv 10' L X 26" W

Qty(40') ridge cap for corrugated steel roof

Qty: 20 boxes@50 each - 2" screws -Self sealing screws

11. DRYWALL CEILINGS - Screw 1/2" drywall to 2" X 8" nailer/ledger and to truss's (See #9)

Qty: (800) sq ft of 1/2" drywall board

Qty: Misc tools - hand and pole sanders, 120 and 220 grit sandpaper, 12" mud pans, mixers, 8" taping knives, utility jab saw, etc

Qty: Yellow Fiba Tape with mastic 500'

Qty: Drywall compound/ Mud

Qty: Bucket - 1 1/4" Drywall Screws

Qty: (10) Drywall Phillips Screw setter driver bits (#1 and #2)

Qty: (2) 24" wide steel trowels for drywall taping and plaster knockdown texture.

12.EXTERIOR / INTERIOR PLASTER - Expo Pro Bond Dry Adhesive (fine) 17-PRO (ph # 858-5664343) or Omega Dry Bond (ph # 800-6006634). Apply with trowel to all interior and exterior surface areas approx 1/4" thick.. Total area is approx. 2,500 sq ft.(2 sides of walls)

Qty for 1 home - (55) sacks @ 50 lbs each. (55 sacks @ 40 sq ft/ sack includes waste)

13. CAULKING: Caulk perimeter of all windows and doors both sides. Also, caulk in electric outlets, light cans/boxes - All Holes.

Qty: (8) tubes of Liquid Nails Adhesive- Projects and Foamboard

Qty (4) caulking guns

Qty (60) tubes Dap caulking with Silicone(5 boxes@ 12)

14. All Painting, Plumbing (rough and finish), Heating, 100 AMP Electric (rough and finish), Cabinets/Countertops, Lighting, Kitchen and Bath fixtures by others.

Qty (1) Cadet Baseboard Heater 6F1500W (6'long) - living room

Qty (2) Cadet Baseboard Heater 4F1000W (4' long) - each bed room.

Qty (1) Ariston GL2.5 Water heater - kitchen sink

Qty (1) Ariston GL4 Water heater at tub/shower/sink.

Note: Use remodel type electric boxes with flanges for compression fitting. Rough in electric and plumbing installed in horizontal lintel channels and “vacant” vertical cavities in ICF forms. Rough plumbing installed in slab.

15. ATTIC VENTS:

Qty (2) Metal gable end attic vents (18" X 18")

16. CLOSET SHELVING:

Qty (2) 1"X12" MDF shelving - 8' long

Qty (2) 1"X4" cleats/ledgers for shelving - 12' long

Qty (2) metal shelf brackets

Qty (4) plastic or wood holders for closet poles

Qty (2) 8' long wood closet poles

17 A. KITCHEN SHELVING:

Qty (1) A. MDF - KD adjustable shelving for kitchen - 8' W X 6' H
(2 base cabinets + 2 upper cabinets)

B. KITCHEN (36"W) AND BATH BASE (30"W) CABINET

18. FIBERGLASS BATTS: Install R-19 fiberglass batts insulation in all lids.

Qty: (750 sq ft) - 24" wide R-19 Kraft paper face.

19. MILLWORK: Kitchen cabinets, top for sink and bath vanity furnished by others.

20. LIGHTS:

Qty: (3) ceiling fan- lights for livingroom and bedrooms
Qty: (1) kitchen ceiling light
Qty: (1) Broan/ Nutone bath ceiling fan/light
Qty: (1) Exterior entry wall hung light
Qty: (2) Halo H7 Can lights - for kitchen sink and bath vanity

21.SHUTTERS:

Qty: (4) plastic shutters 36" H for living room windows
Qty: (2) plastic shutters 36" H for kitchen window

22. FIBERGLASS TUB/SHOWER

Qty (1) Lasco 2 piece tub/shower - left hand

23. MISC ITEMS

Qty:(1 Box) 8d wood nails (sinkers)
Qty: (1 Box) 16d wood nails. (sinkers)
Qty: (2) Electric wire wands, with Extra Wire - to cut ICF foam block to fit door and window rough openings - snug fit to 2X6 wood frame.
Qty: (1) Transformer to cut foam
Qty: (4) rolls of tie wire for rebar (Alt: If necessary -use as replacement for zip ties)
Qty: (5) Linesman pliers to tie rebar
Qty: (400) 3/16" wide plastic Zip Ties - to tie rebar
Qty: (3)Wood saws
Qty: (8) Hole saws
Qty: (1) Electric Milwaukee Sawszall
Qty: (12) blades for sawszall - 4 blades each to cut foam ,wood, steel (8", 10", 12")
Qty: (1) 4 ½" Makita cutter/grinder
Qty: (12) Blades for Makita grinders to cut concrete, steel/ rebar - Also diamond blades
Qty: (1) Dewalt compound mitre saw
Qty: (1) Skil saw with 3 blades - wood
Qty:(2) Hack saws with 6 blades
Qty: (3) DeWalt - 5" Orbital sanders
Qty: (20) cartons of 60 grit, 8 hole sandpaper for Dewalt orbital sander
Qty: (5) cartons of 100 grit, 8 hole sandpaper for DeWalt orbital sander
Qty: (1) Porter Cable Nail Gun - nail gun to handle up to 16d nails
Qty:(6) 16 oz hammers
Qty: (4) Sheets ½" 4'X8' CDX Plywood (gussets, etc.)
Qty (50) 2"X 6"- 8' long for window/door cutouts and lintel supports to pour concrete.
Qty: (3) tubes Henrys waterproof mastic for roof vents/penetrations.
Qty: (8) cans plumbing Great Stuff spray foam big gap filler
Qty: (2) sheets 4'X8' 1/4" masonite

Qty: (2) metal "L" squares
Qty: (2) large "T" squares
Qty: (8) Large Trowels to apply plaster - 4 with foam backing and 4 steel
Qty: (18) 5 gal buckets,
Qty: (4) caulking guns.
Qty: (1) gallon Bondo with extra catalyst.
Qty: (10) 2" Steel putty blades
Qty: (6) 6" Steel putty blades
Qty: (9) Utility knives - extra blades
Qty: (2) Milwaukee Electric Drills - heavy duty Drill/Roto Hammer Combo with 1/2" chuck
Qty: (6) 50' Electric cords
Qty: (3) Long mixing blades for plaster and drywall compound
Qty: (2) Sets - Wood drill bits
Qty: (2) Sets - Masonry bits (all bits to fit in 1/2" chuck)
Qty: (2) 14.4V De Walt Battery drills - 2 batteries and charger per drill
Qty: (6) 4" paint brushes - cut in brushes
Qty: (48) Weenie rollers for rough texture
Qty: (6) Long handles for weenie rollers
Qty: (3) metal grids for painting - 5 gal buckets
Qty: (20) Plastic paint trays
Qty: (300) 3" concrete nails
Qty: (200) 2" concrete nails
Qty: (2) 4' levels
Qty: (2) Chalk lines + chalk
Qty: (1) Can red spray paint
Qty: (2) screw driver sets
Qty: (4) work bench/ saw horses
Qty: (2) Small wrench and socket sets
Qty: (2) Gang Boxes -metal tool boxes to hold small power and hand tools
Qty: (24) Rolls of 1 1/2" masking tape (4packs @ 6 ea)
Qty: (24) Rolls of Red plaster tape
Qty: (4) rolls duct tape
Qty: (2) Boxes - painters 4 mil Visqueen
Qty: (1) Heavy duty Vertical Air Compressor (220)
Qty: (2) Hoppers for air compressor - to spray on plaster
Qty: (4) 50' Air hoses and fittings
Qty: (3) 6' Husky fiberglass ladders
Qty: (2) 8' Husky fiberglass ladders
Qty: (1) roll of teflon tape
Qty: (4) 100 foot water hoses
Qty: (1) Electric Concrete Mixer
Qty: (3) Boxes rags
Qty: (2) Set masonry chisels
Qty: (1) Gasoline Generator (110/220) - 6500W
Qty: (2) Quarts motor oil - generator
Qty: (4) 25' tape measures

Qty: (1) 100' tape
Qty: (1) Large Bolt cutter - to cut and bend rebar
Qty: (1) Staple gun (for stapling Tyvek and Insulation to truss's))
Qty: (2) Boxes of staples
Qty: (6) Nail bags (one pocket)
Qty: (2) Small boxes 3 1/2" drywall nails - grey exterior
Qty : (10) #3 Phillips screwdriver bits - De Walt - for Tapcon Blue Screws
Qty: (10) 1/4" hex drive bits for roofing screws - De Walt
Qty: (1) Small concrete pump - to handle transit mix concrete truck
Qty: (1) First aid Kit
Qty: (6) Cans WD40 - for plaster hopper
Qty: (4) Brooms
Qty: (2) 6' pipe clamps
Qty: (2) 8" "C" clamps