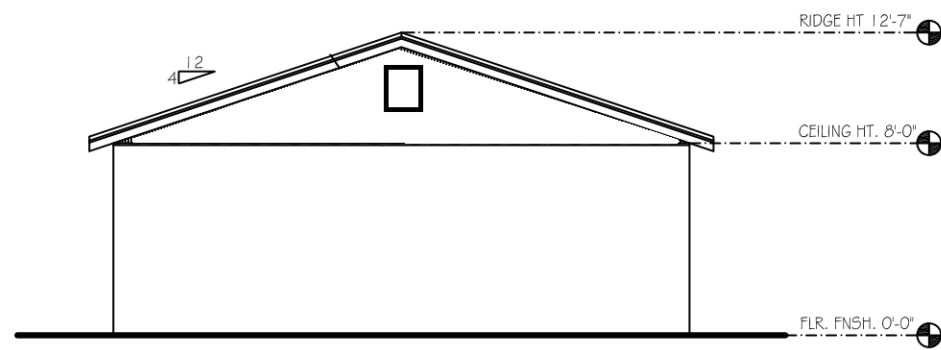
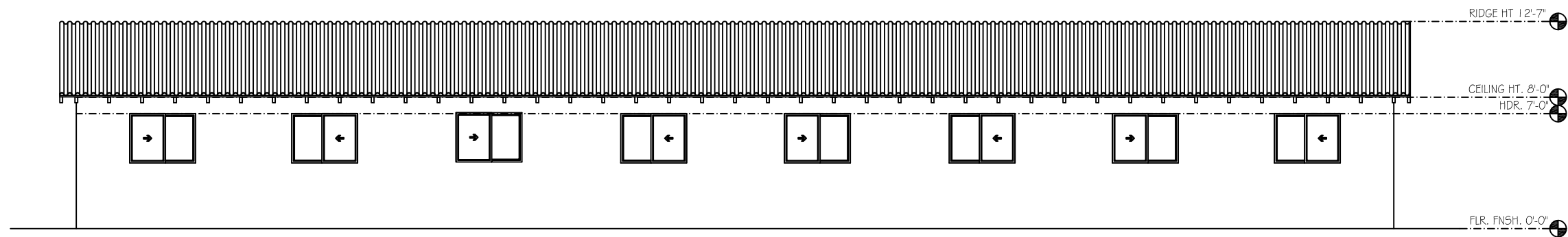


ELEV. 1 PG. 1 OF 9
SCALE: 1/8" = 1'-0"

LAZARIAN WORLD SCHOOL

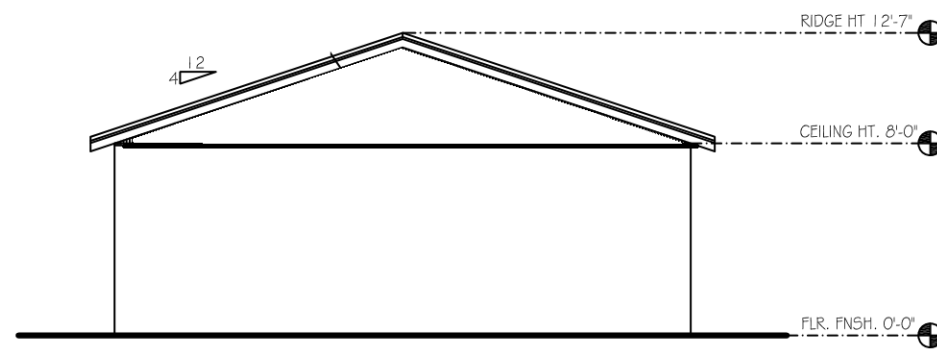


ELEV. 2 PG. 2 OF 9
SCALE: 1/8" = 1'-0"

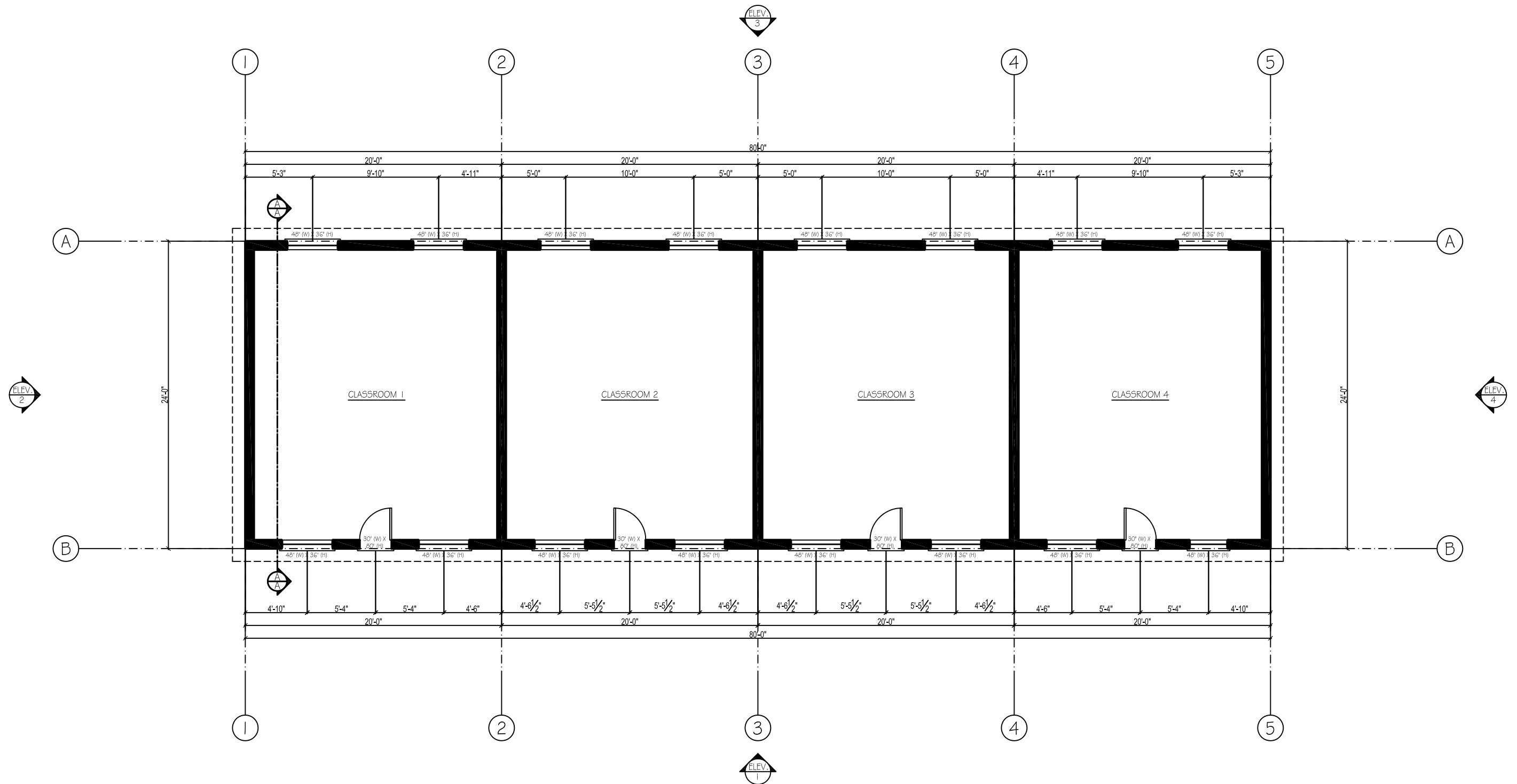


ELEV. 3
SCALE: 1/8" = 1'-0"

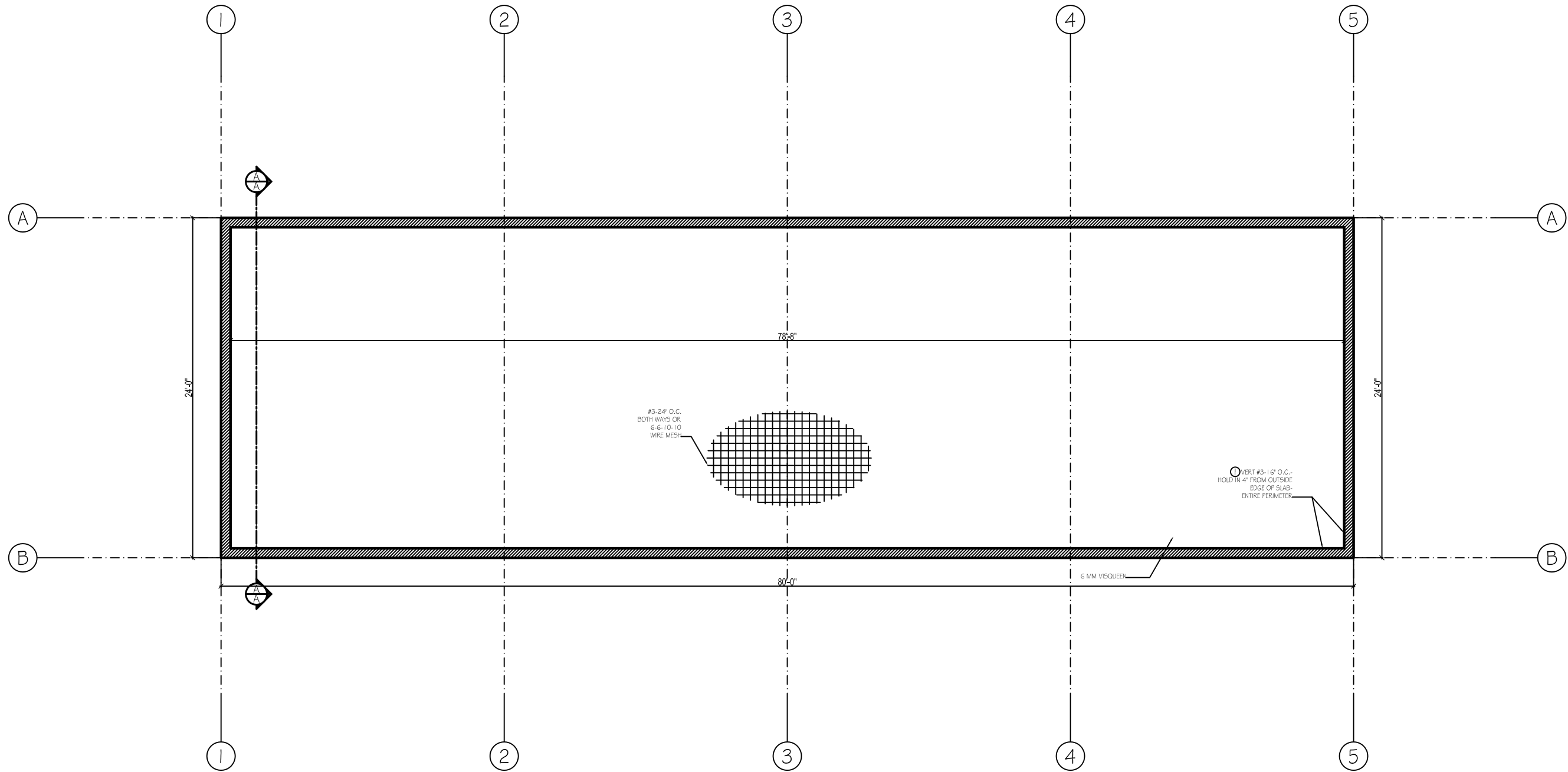
PG. 3 OF 9



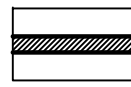
ELEV. 4 PG. 4 OF 9
SCALE: 1/8" = 1'-0"

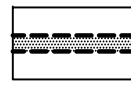


FLOOR PLAN PG. 6 OF 9
 SCALE: 1/8" = 1'-0"

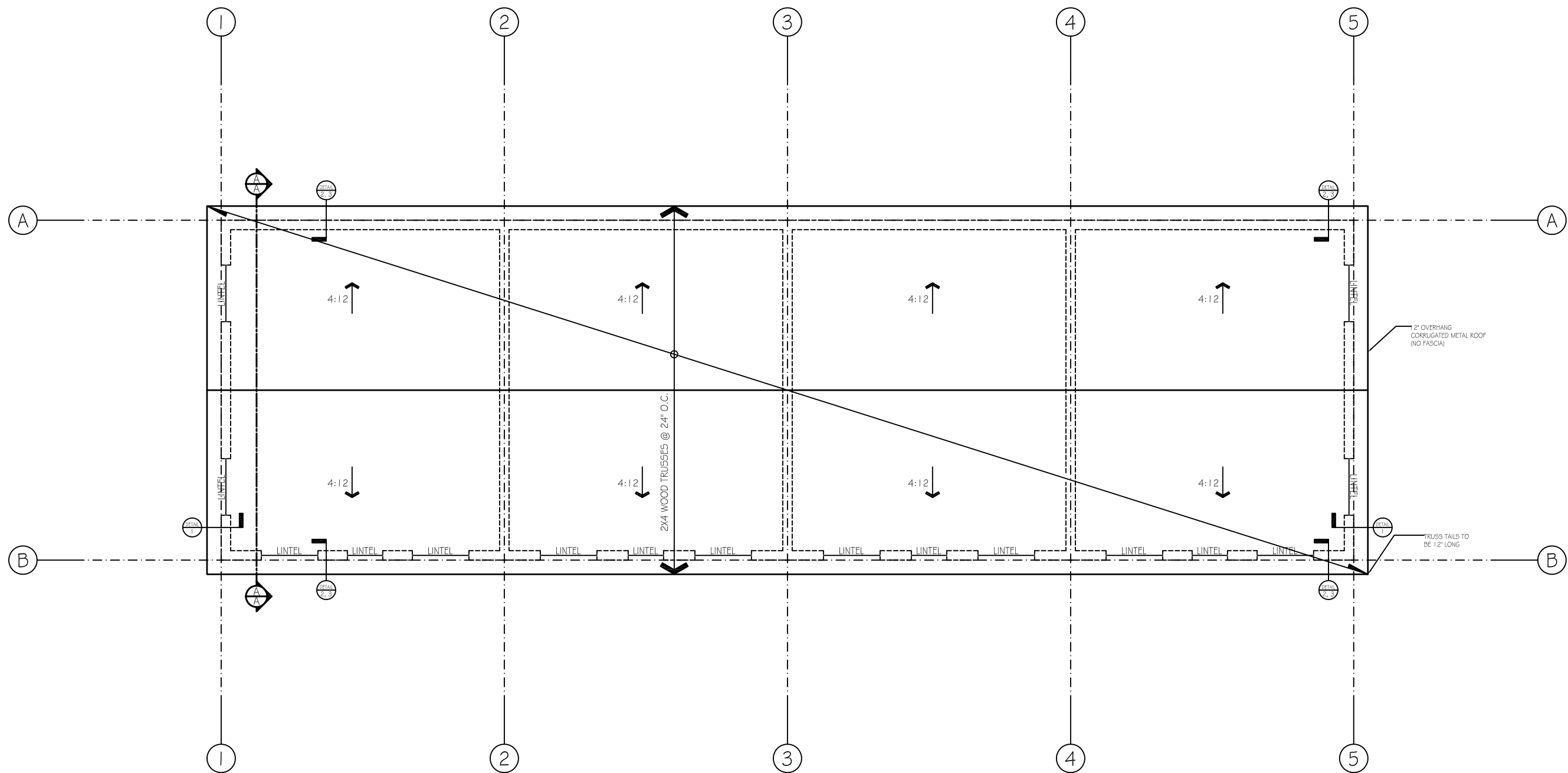


4" CONC. SLAB
 SLAB DIMENSIONS 24'-0" WIDE X 28'-0" DEEP
 4" THICK SLAB W/ #3 - 24" O.C.
 BOTH WAYS OR 6-6-10-10 WIRE MESH
 AND 6 MM VISQUEEN

 WALLS W/ FTGS. 12" WIDE X 24" DEEP W/ #3 REBAR T&B CONTINUOUS - INSTALL #3 VERTICAL REBAR PER DETAIL ①

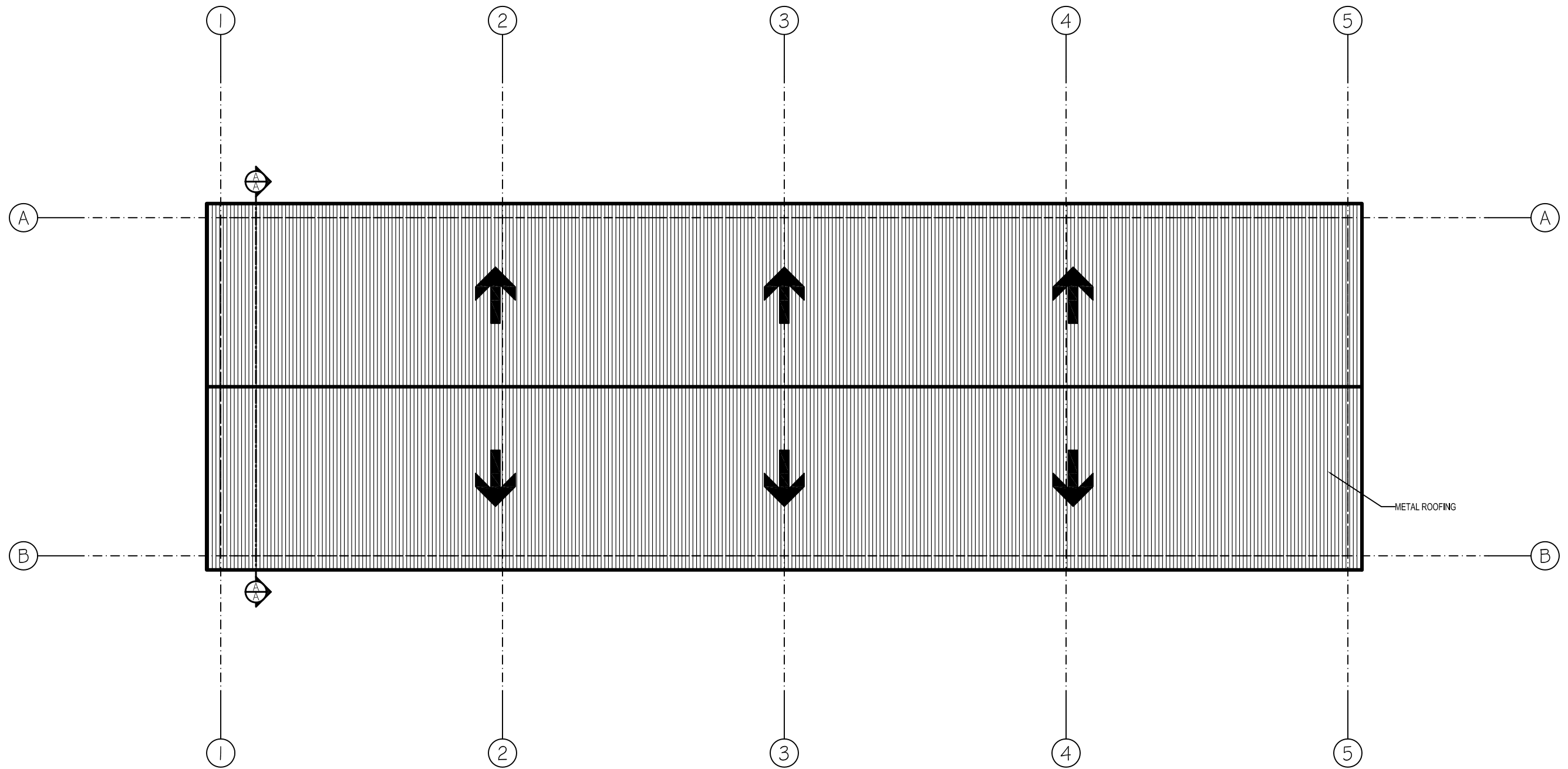
 THICKEN SLAB TO 8" UNDER NON-BEARING WALLS (DRILL AND EPOXY #3 REBAR 3'-0" LONG 16" O.C. INTO ALL NON-BEARING WALLS WITH THICKEN SLAB).

① USE 3'-0" LONG #3 AND EXPOSE 2'-0" LONG VERTICAL (THEREFORE 12" INTO SLAB/FTG. AND TIE TO TOP REBAR). VERTICAL #3 REBAR TO BE 16" O.C. ENTIRE PERIMETER OF SLAB (LAYOUT-HOLD IN 4" FROM OUTSIDE CORNERS AND FROM OUTSIDE EDGE OF SLAB).



NOTE: ALL BEAMS/LINTELS FOR DOOR AND WINDOW OPENINGS TO BE SET AT TOP ROW OF FOAM BLOCK ONLY (8' PLATE LINE AND NET 7' HIGH FOR HEADER/LINTEL CLEARANCE)

FRAMING PLAN PG. 9 OF 9
 SCALE: 1/8" = 1'-0"



ROOF PLAN PG. 7 OF 9
SCALE: 1/8" = 1'-0"